

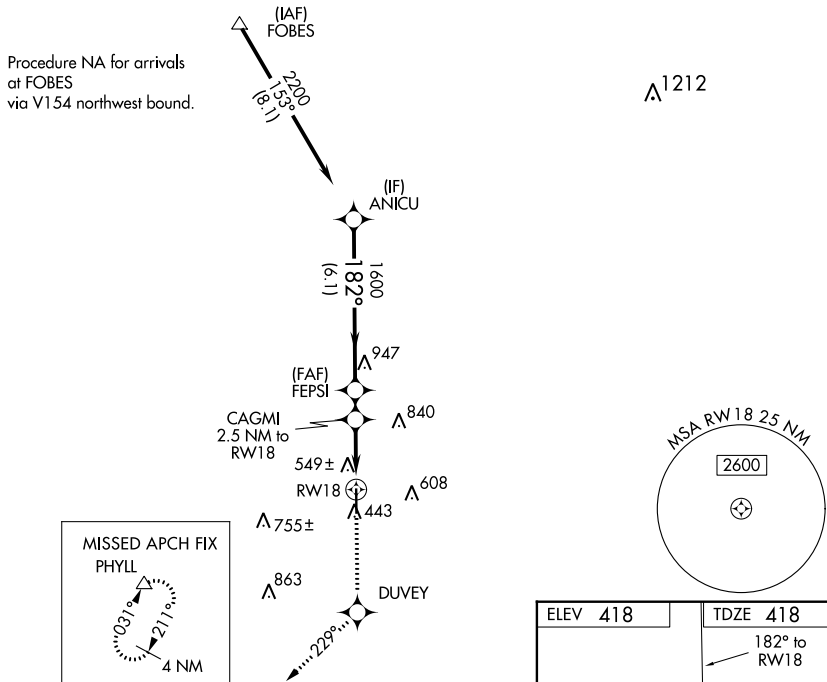
WAAS CH 87104 W18A	APP CRS 182°	Rwy Idg 4999 TDZE 418 Apt Elev 418
--	------------------------	---

RNAV (GPS) RWY 18
PERRY-HOUSTON COUNTY (PXE)

T For uncompensated Baro-VNAV systems, LNAV/VNAV NA below -15°C (5°F) or above 47°C (116°F).
NA DME/DME RNP-0.3 NA.
 If local altimeter setting not received, procedure NA.

MISSED APPROACH: Climb to 2000
direct DUEY and via 229° track
to PHYLL and hold.

AWOS-3 123.825	ATLANTA APP CON ★ 124.2 279.6	UNICOM 122.725 (CTAF) 0
--------------------------	---	-----------------------------------



2000 ↑	DUVEY ✦	229° tr △	VGS1 and RNAV glidepath not coincident (VGS1 Angle 3.00/TCH 30).			
*LNAV only.						
CATEGORY	A		B		C	D
LPV DA			668-1		250 (300-1)	
LNAV/ VNAV DA			854-1½		436 (500-1½)	
LNAV MDA	980-1 562 (600-1)				980-1½ 562 (600-1½)	980-1¾ 562 (600-1¾)
CIRCLING	980-1 562 (600-1)				980-1½ 562 (600-1½)	980-2 562 (600-2)

