

WAAS CH 78304 W21A	APP CRS 206°	Rwy Idg TDZE 485 Apt Elev 485
--	------------------------	---

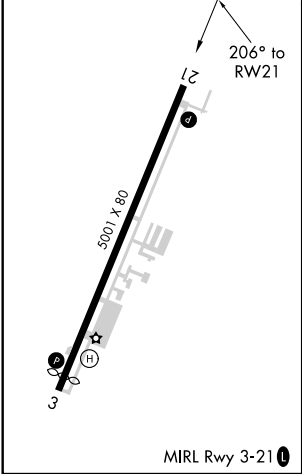
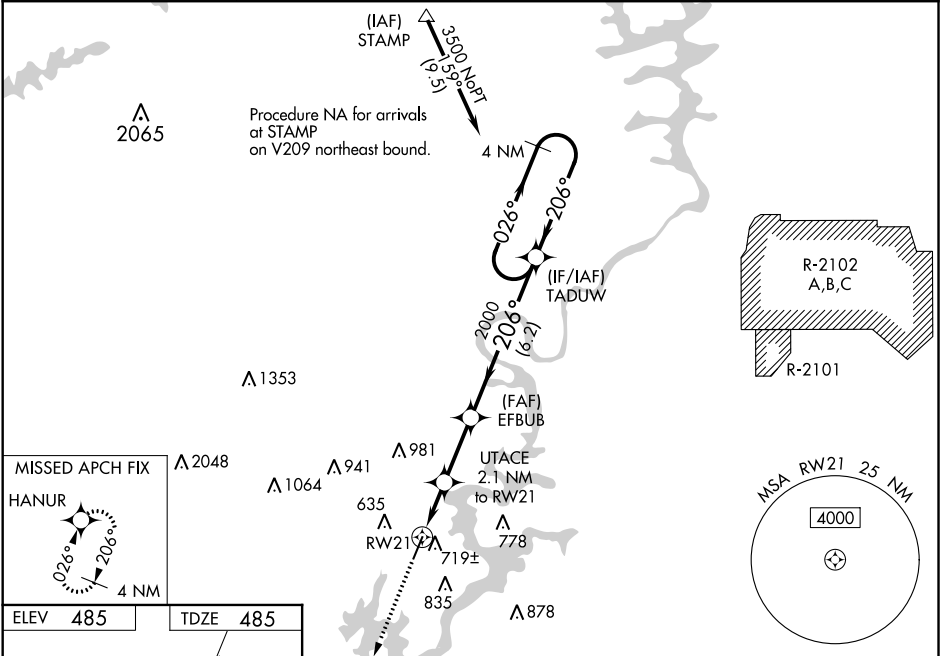
RNAV (GPS) RWY 21
ST CLAIR COUNTY (PLR)

⚠

DME/DME RNP-0.3 NA. When local altimeter setting not received, use Aniston altimeter setting and increase LPV DA to 799 feet and all Cats visibility to 1, increase LNAV/VNAV DA to 964 feet and all visibilities to 1½, increase all MDA 80 feet and LNAV Cat C/D to 1½ and Circling Cat C to 2½ and Cat D to 3. For uncompensated Baro-VNAV systems, LNAV/VNAV NA below -15°C (5°F) or above 54°C (130°F). Baro-VNAV and VDP NA when using Aniston altimeter setting.

MISSED APPROACH:
Climb to 4000 direct HANUR and hold, continue climb-in-hold to 4000.

AWOS-3P 119.625	BIRMINGHAM APP CON 123.8 256.8	GCO 121.725	UNICOM 123.05 (CTAF) 0
---------------------------	--	-----------------------	---



4000	HANUR	UTACE 2.1 NM to RWY 21	EFBUB 2000	TADUW 4 NM Holding Pattern	3500	GP 3.00° TCH 53
*LNAV only.		*1.4 NM to RWY 21	1200*	2000		
	1.4 NM	0.7 NM	2.5 NM	6.2 NM		
CATEGORY	A	B	C	D		
LPV DA		735-¾	250 (300-¾)			
LNAV/VNAV DA		900-1¾	415 (500-1¾)			
LNAV MDA	980-1	495 (500-1)	980-1¾	495 (500-1¾)		
CIRCLING	1180-1	695 (700-1)	1240-2¼ 755 (800-2¼)	1340-2¾ 855 (900-2¾)		