

WAAS CH <b>72924</b> <b>W02A</b>	APP CRS <b>017°</b>	Rwy Idg <b>5000</b> TDZE <b>361</b> Apt Elev <b>365</b>
--	------------------------	---

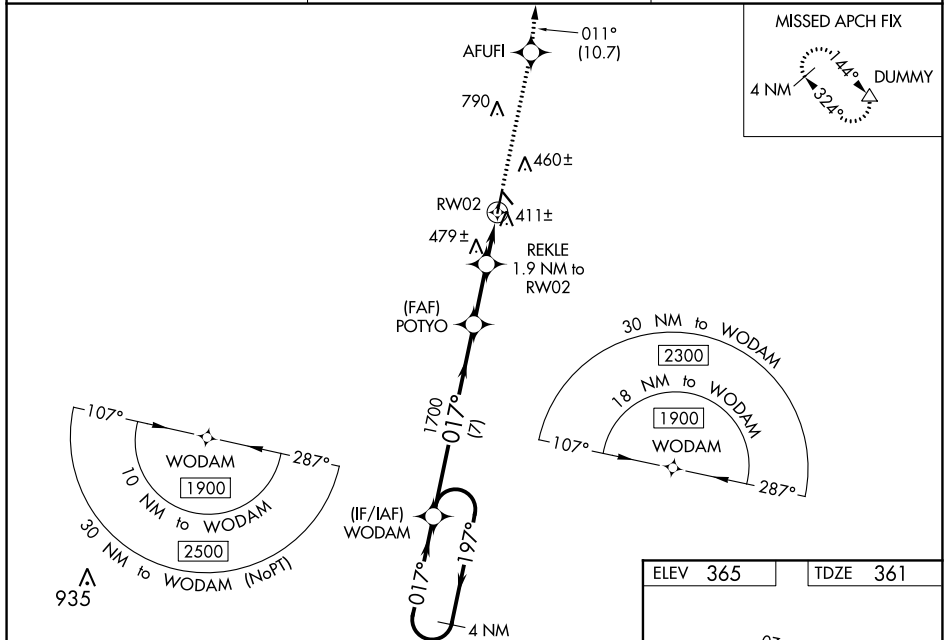
RNAV (GPS) RWY 2  
FITZGERALD MUNI (FZG)

**⚠** Circling NA to Rwy 15 and 33. Baro-VNAV and VDP NA when using Tifton altimeter setting. DME/DME RNP-0.3 NA. For uncompensated Baro-VNAV systems, LNAV/VNAV NA below -15°C or above 54°C. When local altimeter setting not received, use Tifton altimeter setting: increase LPV DA to 656 feet and LNAV/VNAV DA to 691 feet; increase LNAV/VNAV all Cats visibility  $\frac{1}{8}$  SM, LNAV Cats C/D visibility  $\frac{1}{8}$  SM, and Circling Cats C/D visibility  $\frac{1}{4}$  SM. Inop table does not apply to LPV all Cats and LNAV Cats C/D. For inop ALS increase LNAV/VNAV Cats A/B visibility to  $\frac{1}{2}$  SM. For inop ALS when using Tifton altimeter setting increase LPV Cats A/B visibility to  $\frac{1}{2}$  SM and LNAV/VNAV Cats A/B visibility to 1 SM.

ODAL



AWOS-3 <b>118.625</b>	JACKSONVILLE CENTER <b>127.575 269.025</b>	UNICOM <b>123.0</b> (CTAF) <b>L</b>
--------------------------	---	--



4 NM Holding Pattern

WODAM

POTYO

1900

1700

197°

017°

GP 3.00° TCH 40

7 NM

2.2 NM

0.8 NM

1.1 NM

REKLE 1.9 NM to RW02

\*1.1 NM to RW02

\*1000

RW02

VGS and RNAV glidepath not coincident (VGS Angle 3.00/TCH 31).

2300 AFUFI DUMMY

tr 011°

\*LNAV only.

CATEGORY	A	B	C	D
LPV DA		611- $\frac{3}{4}$	250 (300- $\frac{3}{4}$ )	
LNAV/VNAV DA		646- $\frac{3}{4}$	285 (300- $\frac{3}{4}$ )	
LNAV MDA	740- $\frac{3}{4}$	379 (400- $\frac{3}{4}$ )	740-1	379 (400-1)
<b>C</b> CIRCLING	880-1	515 (600-1)	1160-2 $\frac{1}{4}$ 795 (800-2 $\frac{1}{4}$ )	1160-2 $\frac{1}{2}$ 795 (800-2 $\frac{1}{2}$ )