

LOC/DME I-MDQ <u>109.75</u> Chan 34 (Y)	APP CRS 185°	Rwy Idg 6500 TDZE 740 Apt Elev 764
---	------------------------	---

ILS or LOC RWY 18

HUNTSVILLE EXECUTIVE TOM SHARP JR FIELD (MDQ)

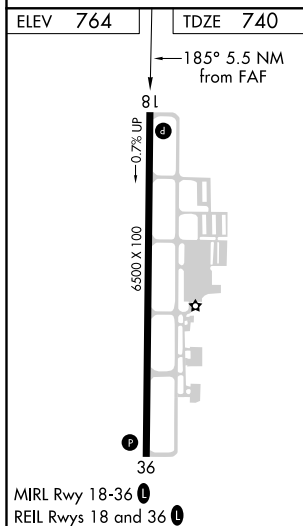
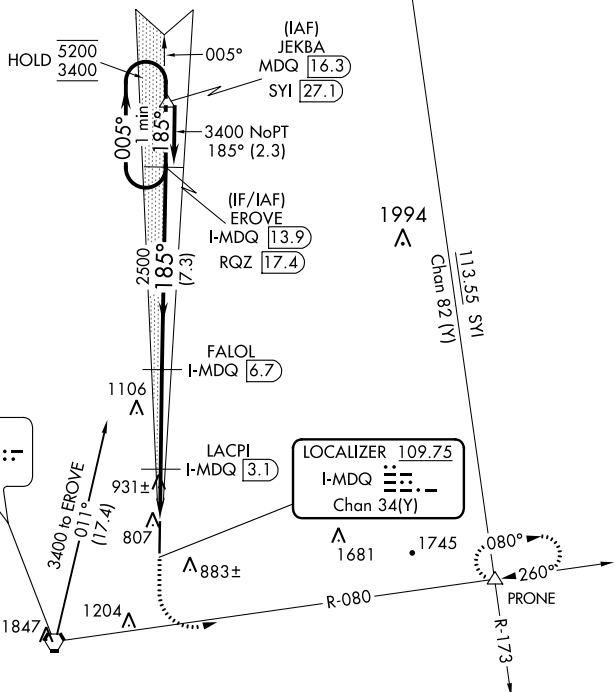
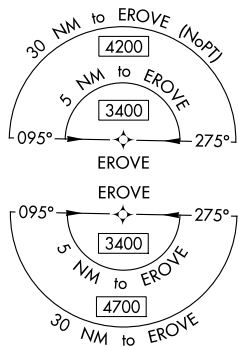
DME or RNAV 1- GPS required.



Rwy 18 helicopter visibility reduction below $\frac{3}{4}$ SM NA.

MISSED APPROACH: Climb to 1200 then climbing left turn to 4000 on heading 120° and on RQZ VORTAC R-080 to PRONE INT and hold, continue climb-in-hold to 4000.

AWOS-3PT 120.0	HUNTSVILLE APP CON ★ 125.6 354.1	GCO 121.725	UNICOM 123.0 (CTAF) ①
--------------------------	--	-----------------------	---------------------------------



	RQZ R-080	PRONE △	EROVE I-MDQ 13.9	One Minute Holding Pattern
*LOC only.	*I-MDQ 2.6 I-MDQ 1.2	LACPI I-MDQ 3.1	FALOL I-MDQ 6.7	005° → 5200 ← 185° 3400
1.4	0.5 NM	3.6 NM	7.3 NM	GS 3.00° TCH 43
CATEGORY	A	B	C	D
S-ILS 18	940- ³ / ₄	200 (200- ³ / ₄)		
S-LOC 18	1200-1	460 (500-1)		
C CIRCLING	1260-1	496 (500-1)	1560-2 ¹ / ₄ 796 (800-2 ¹ / ₄)	2000-3 1236 (1300-3)

ILS or LOC RWY 18