

VORTAC RQZ <b>112.2</b> Chan <b>59</b>	APP CRS <b>043°</b>	Rwy Idg TDZE Apt Elev	<b>N/A</b> <b>N/A</b> <b>764</b>
--	------------------------	-----------------------------	--

VOR-B  
HUNTSVILLE EXECUTIVE TOM SHARP JR FIELD (MDQ)

DME required.



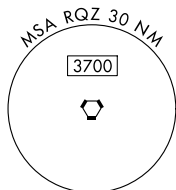
MISSED APPROACH: Climbing left turn to 3000 direct RQZ VORTAC and hold.

AWOS-3PT  
120.0

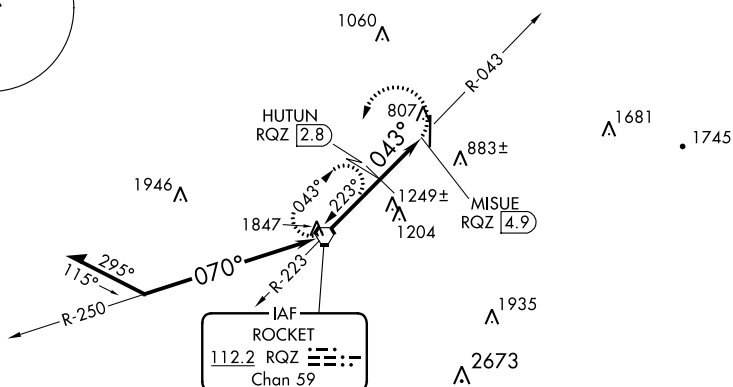
HUNTSVILLE APP CON★  
125.6 354.1

GCO  
121.725

UNICOM  
123.0 (CTAF) **L**

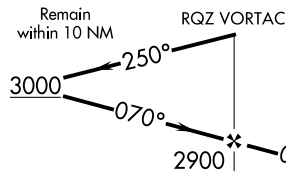


NoPT for arrival on RQZ VORTAC  
airway radials 147 CW 261.

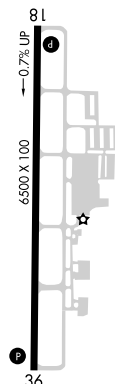
R-2104  
6051

R-2104B


ELEV	764
------	-----



3000	RQZ
	

043° to  
148.15°

MIRL Rwy 18-36 **L**  
REIL Rwys 18 and 36 **L**

		2.8 NM		2.1 NM		
CATEGORY	A	B	C	D		
 CIRCLING	1500-1	736 (800-1)	1560-2¼ 796 (800-2¼)	2000-3 1236 (1300-3)		