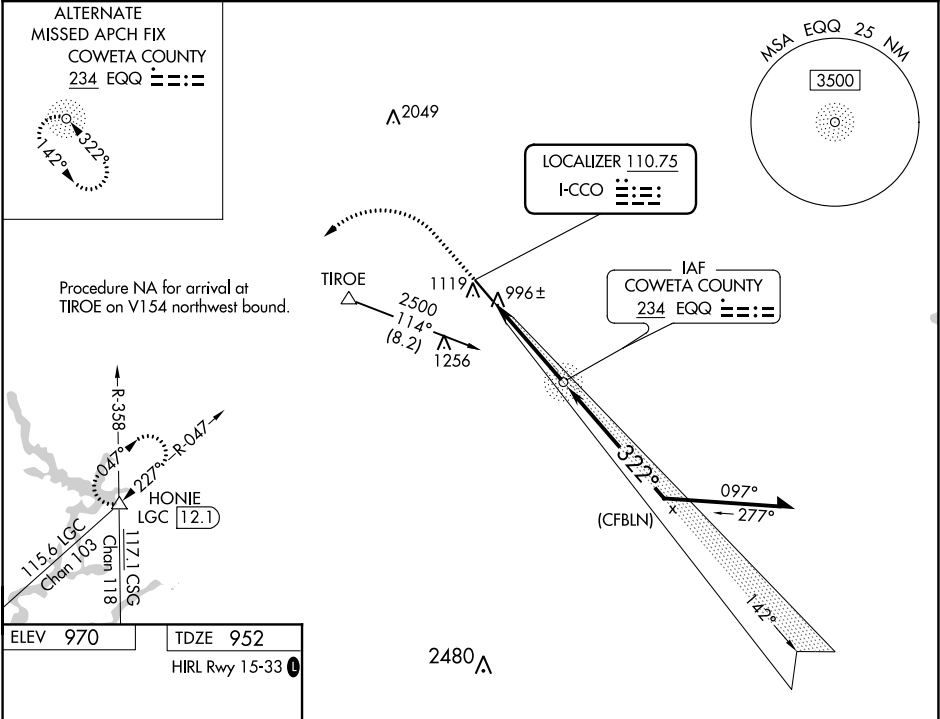


LOC I-CCO	APP CRS	Rwy Idg	5500
110.75	322°	TDZE	952
		Apt Elev	970

ILS or LOC RWY 32
NEWNAN COWETA COUNTY (C'CO)

ADF required		MALSF	MISSED APPROACH: Climb to 1800 then climbing left turn to 4000 on LGC VORTAC R-047 to HONIE INT/LGC 12.1 DME and hold.	
Rwy 32 helicopter visibility reduction below ¾ SM NA. Inop table does not apply.				
AWOS-3PT	ATLANTA APP CON	CLNC DEL	GCO	UNICOM
118.975	119.8 354.125	119.8	121.725	122.7 (CTAF) 1



1800

↑

4000

LGC R-047

HONIE

△

EQQ NDB

2214

142°

2500

322°

2300

GS 3.00° TCH 36

3.9 NM

VGSI and ILS glidepath not coincident (VGSI Angle 3.00/TCH 49).

Remain within 10 NM

CATEGORY	A	B	C	D
S-ILS 32	1202-1 250 (300-1)			
S-LOC 32	1260-1 308 (300-1)			
CIRCLING	1420-1 450 (500-1)		1540-1½ 570 (600-1½)	1600-2 630 (700-2)