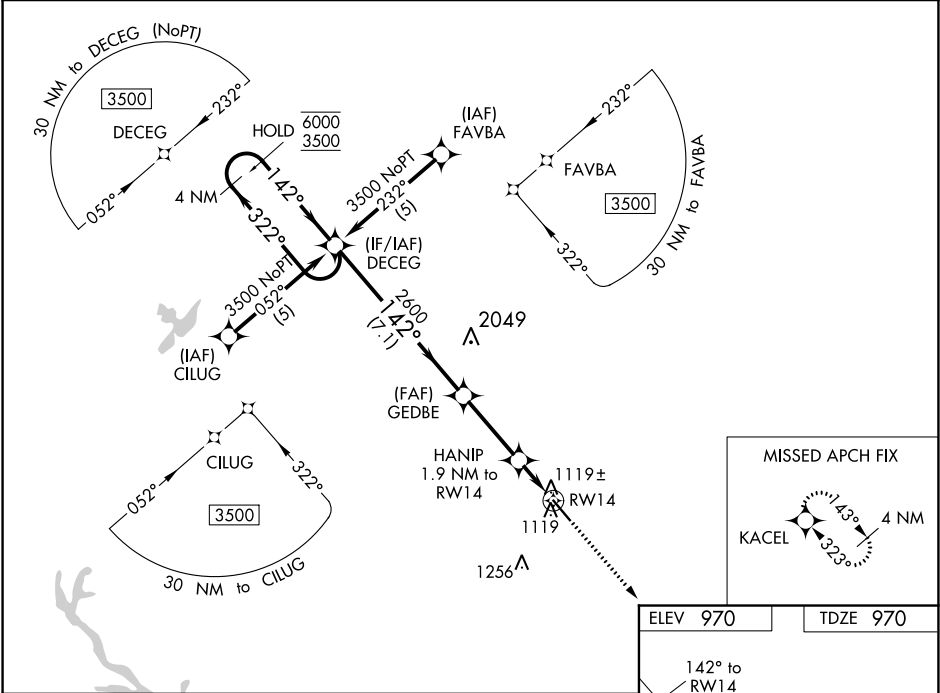


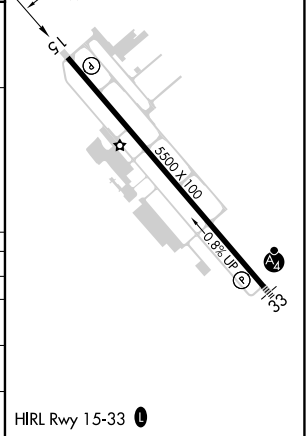
WAAS CH <b>70515</b> <b>W14A</b>	APP CRS <b>142°</b>	Rwy Idg TDZE <b>970</b> Apt Elev <b>970</b>
--	------------------------	---

**RNAV (GPS) RWY 14**  
NEWNAN COWETA COUNTY (C'CO)

RNP APCH.		MISSED APPROACH: Climb to 3500 direct KACEL and hold.		
AWOS-3PT <b>118.975</b>		ATLANTA APP CON <b>119.8 354.125</b>	CLNC DEL <b>119.8</b>	GCO <b>121.725</b>
		UNICOM <b>122.7 (CTAF) 0</b>		



4 NM Holding Pattern DECEG		VGSI and RNAV glidepath not coincident (VGSI Angle 3.00/TCH 40).		3500	KACEL
6000 ← 322° 3500 ← 142°		GEDBE 2600		*LNNAV only.	
GP 3.00° TCH 56		HANIP 1.9 NM to RW14		*1.2 NM to RW14	
		*1620		RW14	
		7.1 NM		3 NM	
		0.7		1.2 NM	
CATEGORY	A	B	C	D	
LPV DA	1300-1		330 (400-1)		
LNNAV/VNAV DA	1389-1½		419 (500-1½)		
LNNAV MDA	1380-1	410 (500-1)	1380-1¼	410 (500-1¼)	
CIRCLING	1420-1	450 (500-1)	1560-1½ 590 (600-1½)	1560-2 590 (600-2)	



SE-4, 03 DEC 2020 to 31 DEC 2020

SE-4, 03 DEC 2020 to 31 DEC 2020