


LOC/DME I-FFC 111.95 Chan 56 (Y)	APP CRS 313°	Rwy Idg TDZE Apt Elev 5568 808 808
--	------------------------	--

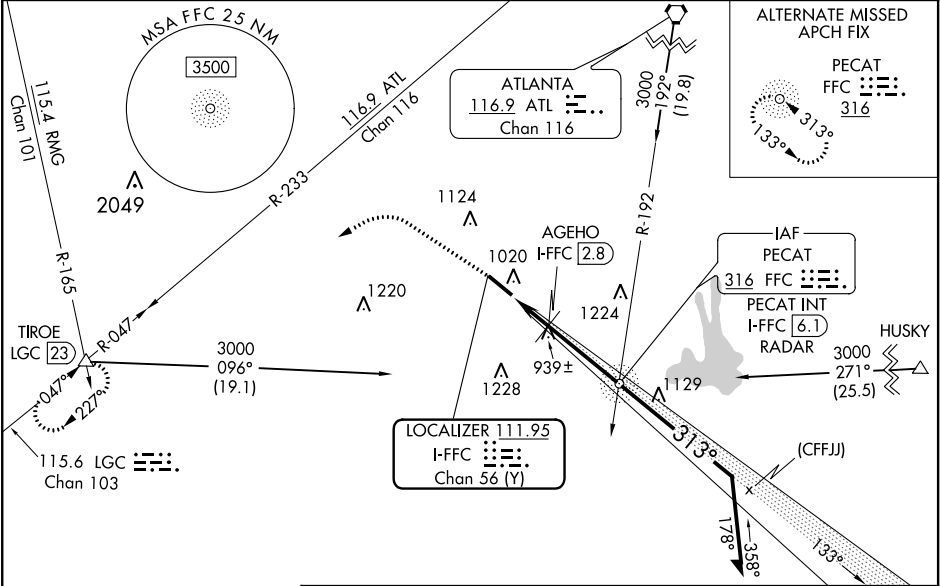
ILS or LOC RWY 31
ATLANTA RGNL FALCON FIELD (F'F'C')




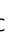
⚠ Inoperative table does not apply. Rwy 31 helicopter visibility reduction below $\frac{3}{4}$ SM NA.
⚠ When local altimeter setting not received, use Newnan Coweta County altimeter setting and increase all DA 47 feet and all MDA 60 feet; increase S-ILS 31 all Cats visibility $\frac{1}{8}$ mile; increase S-LOC 31 Cats C/D and Circling Cat C visibility $\frac{1}{8}$ mile; increase Circling Cat D visibility $\frac{1}{4}$ mile; increase AGEHO Fix Minimums S-LOC 31 Cats C/D and Circling Cat D visibility $\frac{1}{4}$ mile. Circling Rwy 13 NA at night.

ODALS


MISSED APPROACH: Climb to 1700 then climbing left turn to 4000 on heading 275° and LGC VORTAC R-047 to TIROE INT/LGC 23 DME and hold.

ASOS 118.525	ATLANTA APP CON 119.8 354.125	CLNC DEL 119.8	UNICOM 123.05 (CTAF) 0
------------------------	---	--------------------------	---



ELEV 808	TDZE 808	1700	4000	LGC R-047	TIROE	VGSI and ILS glidepath not coincident (VGSI Angle 3.00/TCH 45). Remain within 10 NM
						
		hdg 275°				
		*LOC only.				
		AGEHO I-FFC [2.8]				
		I-FFC [1]				
		1360*				
		1.8	3.3 NM			
		2481				
		133°				
		313°				
		2500				
		2500				
		*1420 when using Newnan Coweta County altimeter setting.				
		GS 3.00°				
		TCH 38				
		CATEGORY	A	B	C	D
		S-ILS 31	1082-1 274 (300-1)			
		S-LOC 31	1360-1 552 (600-1)	1360-1½ 552 (600-1½)		
		CIRCLING	1360-1 552 (600-1)	1440-1¾ 632 (700-1¾) 1540-2¼ 732 (800-2¼)		
		AGEHO FIX MINIMUMS (DME REQUIRED)				
		S-LOC 31	1200-1 392 (400-1)	1200-1½ 392 (400-1½)		
		CIRCLING	1320-1 512 (600-1)	1440-1¾ 632 (700-1¾) 1540-2¼ 732 (800-2¼)		