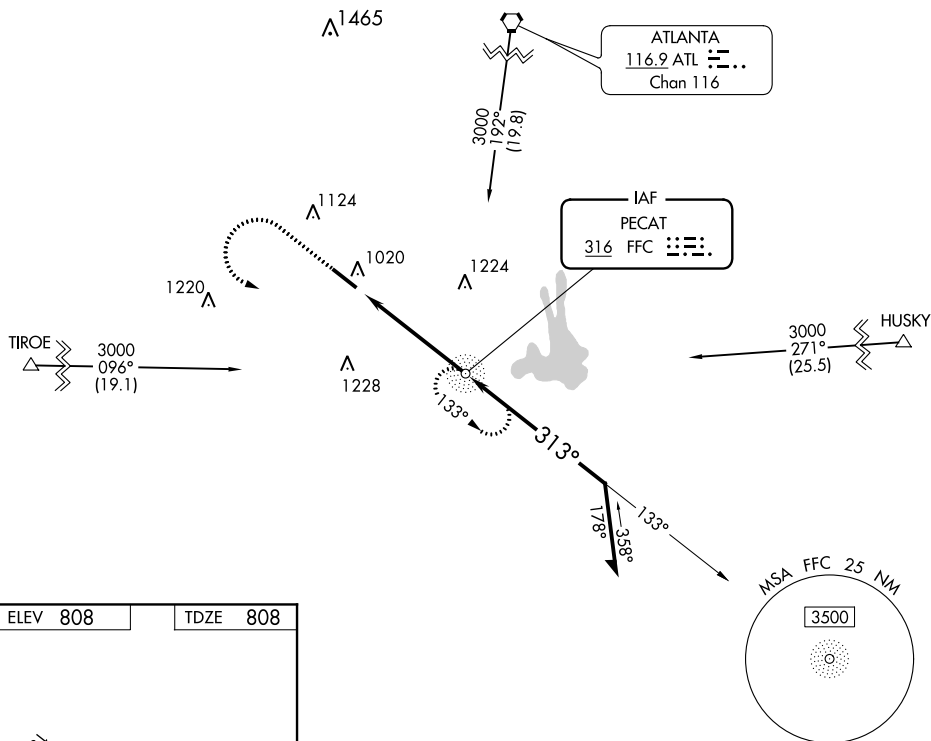


NDB RWY 31  
ATLANTA RGNL FALCON FIELD (FFC)

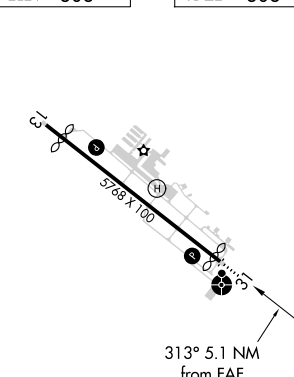
ODALS

**MISSED APPROACH:** Climb to 1700 then climbing left turn to 2500 direct FFC NDB and hold.

UNICOM  
123.05 (CTAF) **L**



TDZE	80
------	----



REIL Rwy 13 **L**  
MIRL Rwy 13-31 **L**

FAF to MAP 5.1 NM

Knots	60	90	120	150	180
Min:Sec	5:06	3:24	2:33	2:02	1:42

CATEGORY	A	B	C	D
S-31	1360-1	552 (600-1)	1360-1 <sup>5</sup> 552 (600-1 <sup>5</sup> )	552 (600-1 <sup>5</sup> )
CIRCLING	1360-1	552 (600-1)	1360-1 <sup>5</sup> 552 (600-1 <sup>5</sup> )	1440-2 632 (700-2)