
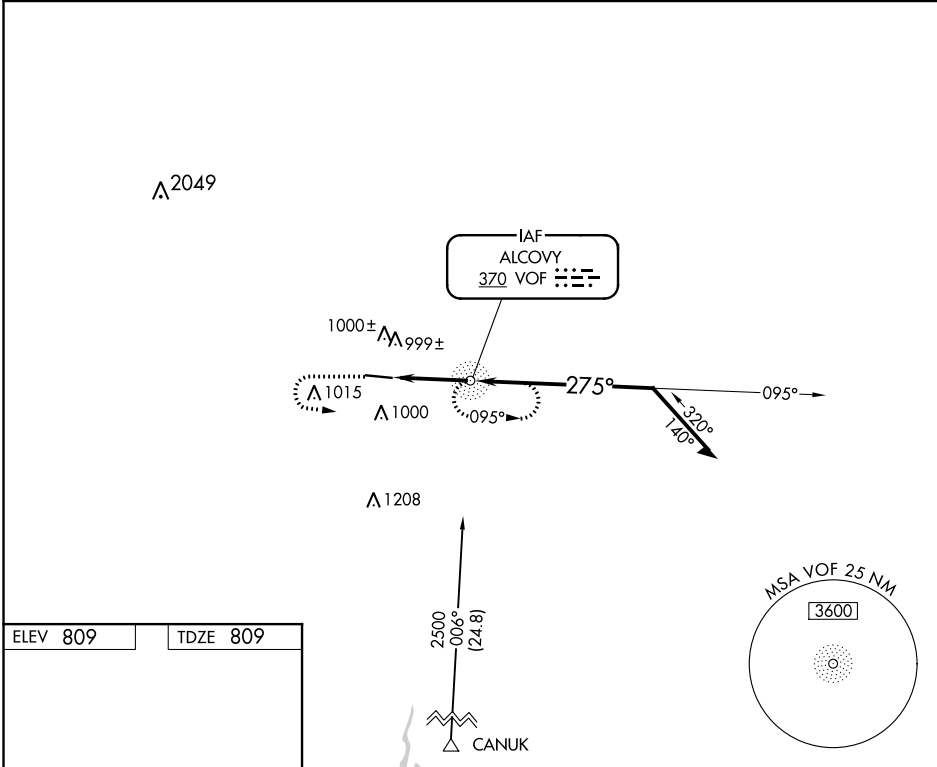


NDB	VOF	APP CRS	Rwy Idg	5500
370	275°	TDZE	809	
		Apt Elev	809	

NDB RWY 28
COVINGTON MUNI (CVC)

<p>⚠ NA Helicopter visibility reduction below ¾ SM NA. When local altimeter setting not received, use Lawrenceville altimeter setting and increase all MDA 100 feet and S-28 Cats C/D visibilities ¾ mile and Circling Cat C visibility ¼ mile.</p>	<p>MALSRL</p> 	<p>MISSED APPROACH: Climb to 2000 then climbing left turn to 2500 direct VOF NDB and hold.</p>
---	---	--

AWOS-3 118.725	ATLANTA APP CON 128.575 343.675	CLNC DEL 119.875	UNICOM 123.0 (CTAF) 0
-------------------	------------------------------------	---------------------	--------------------------



2000		2500	VOF	VOF NDB		Remain within 10 NM
275° 2.8 NM from FAF		275°		095°		2500
3.49° TCH 45		2.8 NM		1900		VGSI and descent angles not coincident (VGSI angle 3.00/TCH 32).
CATEGORY		A	B	C	D	
S-28		1300-1	491 (500-1)	1300-1½	491 (500-1½)	
CIRCLING		1300-1	1360-1	1360-1½	1360-2	
		491 (500-1)	551 (600-1)	551 (600-1½)	551 (600-2)	