

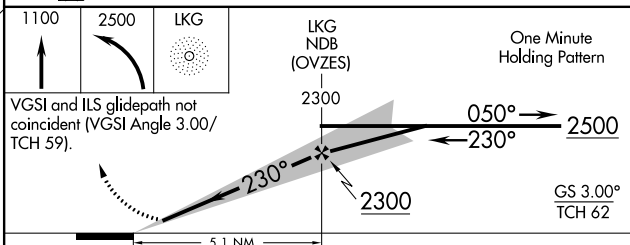
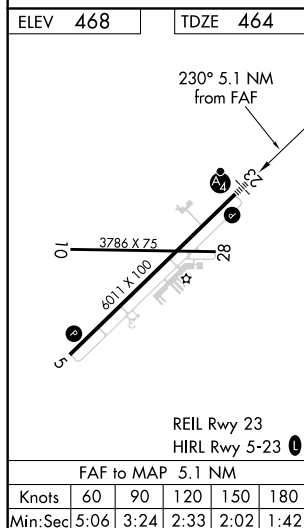
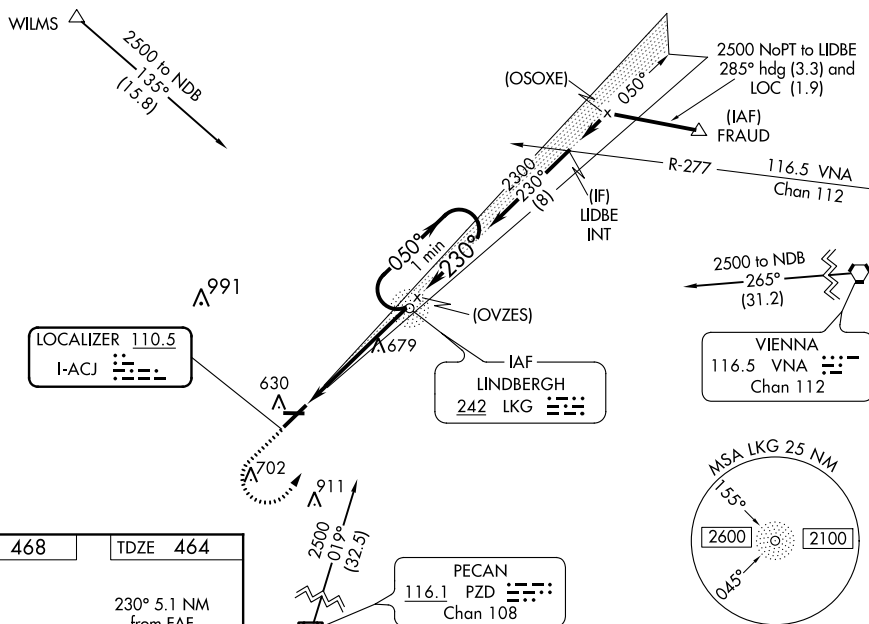
ILS or LOC RWY 23
JIMMY CARTER RGNL (ACT)

T Rwy 23 helicopter visibility reduction below $\frac{3}{4}$ SM NA. When local altimeter setting not received, use Columbus altimeter setting and increase all DA 114 feet and all MDA 120 feet; increase ILS all Cats visibility $\frac{3}{4}$ mile, increase LOC Cats C and D visibility $\frac{3}{4}$ mile, and increase Circling Cats C and D visibility $\frac{1}{4}$ mile. For inop MALSF, when using Columbus altimeter setting, increase ILS all Cats visibility to $\frac{3}{4}$ mile, increase LOC Cat D visibility to $\frac{1}{4}$ mile, and increase Circling Cat D visibility to $\frac{2}{4}$ mile.

A NA

Circling Rwy 10, 28 NA at night.

MISSED APPROACH: Climb to 1100 then climbing left turn to 2500 direct LKG NDB and hold.

UNICOM
122.8 (CTAF) 

CATEGORY	A	B	C	D
S-ILS 23	775- ³ / ₄		311 (400- ³ / ₄)	
S-LOC 23	940- ³ / ₄ 476 (500- ³ / ₄)		940-1 ¹ / ₈ 476 (500-1 ¹ / ₈)	
CIRCLING	940-1	472 (500-1)	940-1 ¹ / ₂ 472 (500-1 ¹ / ₂)	1020-2 552 (600-2)