

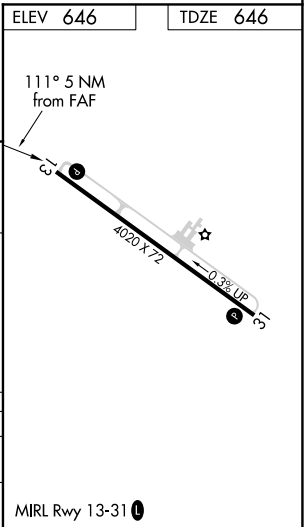
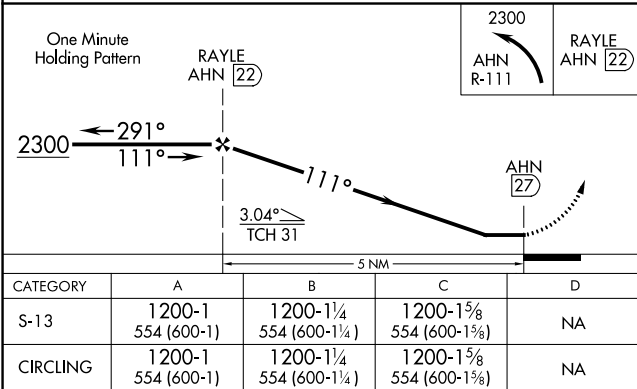
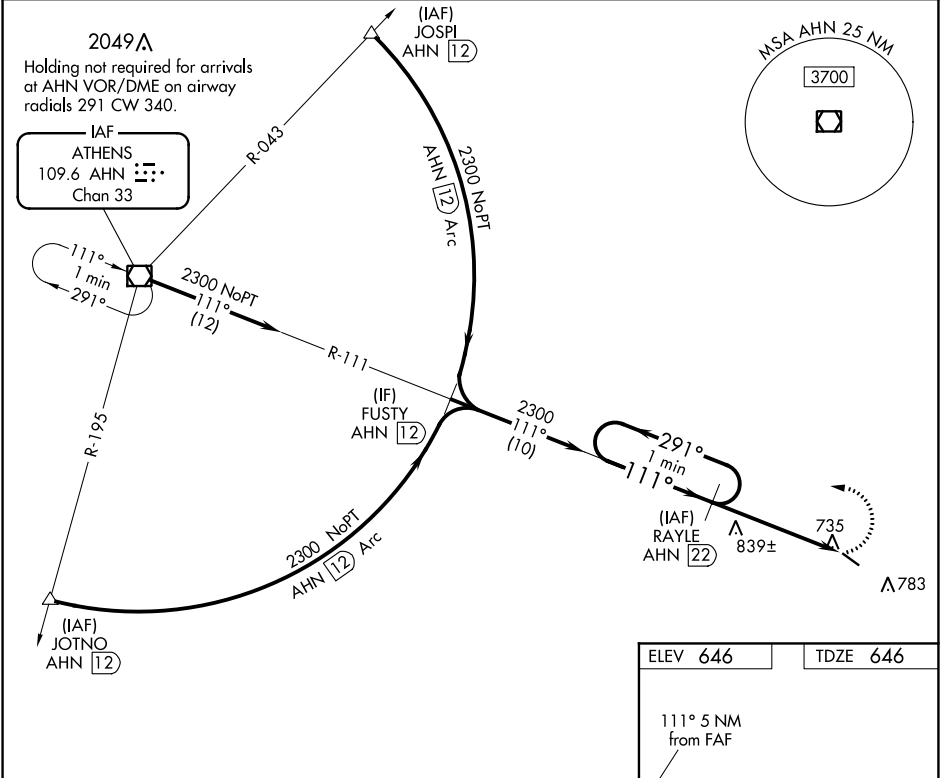
| | | | |
|-------------|---------|----------|------|
| VOR/DME AHN | APP CRS | Rwy Idg | 4020 |
| 109.6 | 111° | TDZE | 646 |
| Chan 33 | | Apt Elev | 646 |

VOR/DME RWY 13
WASHINGTON-WILKES COUNTY (IIY)

▲ NA If local altimeter setting not received, use Athens altimeter setting and increase all MDAs 100 feet.
Rwy 13 helicopter visibility reduction below 3/4 SM NA.

MISSED APPROACH: Climbing left turn to 2300 via AHN R-111 to RAYLE/22 DME and hold.

| | | |
|-------------------|----------------------------------|--------------------------|
| AWOS-3 118.375 | AUGUSTA APP CON ★ 126.8 270.3 | UNICOM 122.7 (CTAF) 0 |
|-------------------|----------------------------------|--------------------------|



SE-4, 03 DEC 2020 to 31 DEC 2020

SE-4, 03 DEC 2020 to 31 DEC 2020