

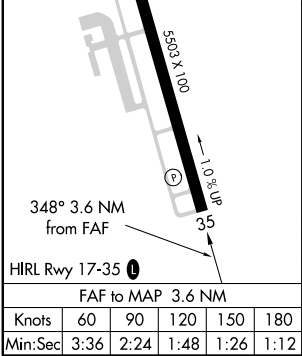
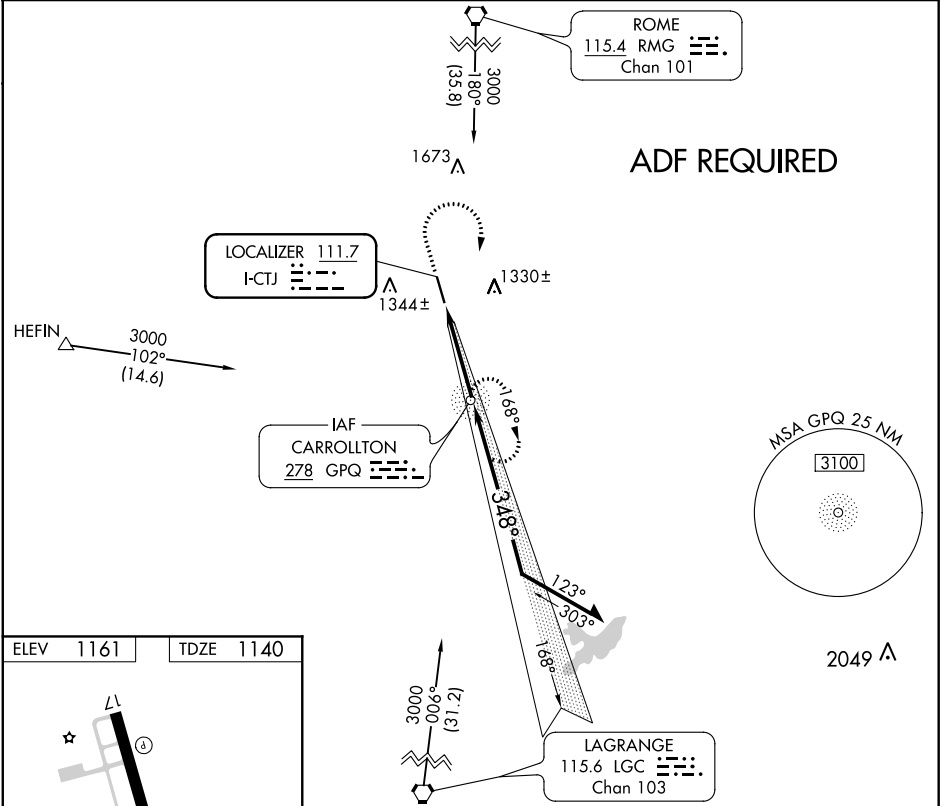
LOC I-CTJ <b>111.7</b>	APP CRS <b>348°</b>	Rwy Idg TDZE <b>1140</b> Apt Elev <b>1161</b>
---------------------------	------------------------	---




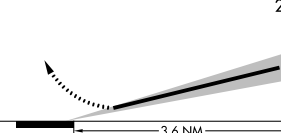
ILS or LOC RWY 35  
WEST GEORGIA RGNL-O V GRAY FIELD (CTJ)

**⚠** When local altimeter setting not received, use Newnan Coweta County altimeter setting and increase DA to 1430 feet and all Cats visibility ¼ mile; increase all MDA 100 feet and S-LOC 35 Cat C and Circling Cat C visibility ¼ mile and S-LOC 35 Cat D visibility ½ mile. ADF Required.

**MISSED APPROACH:** Climb to 1800 then climbing right turn to 3000 direct GPQ NDB and hold.

AWOS-3 <b>118.175</b>	ATLANTA APP CON <b>121.0 268.7</b>	CLNC DEL <b>121.6</b>	UNICOM <b>122.975 (CTAF) 0</b>
--------------------------	---------------------------------------	--------------------------	-----------------------------------



1800	3000	GPQ	GPQ NDB				VGSI and ILS glidepath not coincident (VGSI Angle 3.00/TCH 54). Remain within 10 NM			
									GS 3.00° TCH 47	
CATEGORY			A		B		C		D	
S-ILS 35					1340- <sup>3</sup> / <sub>4</sub>		200 (200- <sup>3</sup> / <sub>4</sub> )			
S-LOC 35					1480-1		340 (400-1)			
CIRCLING			1660-1 499 (500-1)		1680-1 519 (600-1)		1680-1 <sup>1</sup> / <sub>2</sub> 519 (600-1 <sup>1</sup> / <sub>2</sub> )		1720-2 559 (600-2)	

SE-4, 03 DEC 2020 to 31 DEC 2020

SE-4, 03 DEC 2020 to 31 DEC 2020