

WAAS
CH **60907**
W35A

APP CRS
348°

Rwy ldg **5503**
TDZE **1140**
Apt Elev **1161**

RNAV (GPS) RWY 35

WEST GEORGIA RGNL-O V GRAY FIELD (CTJ)

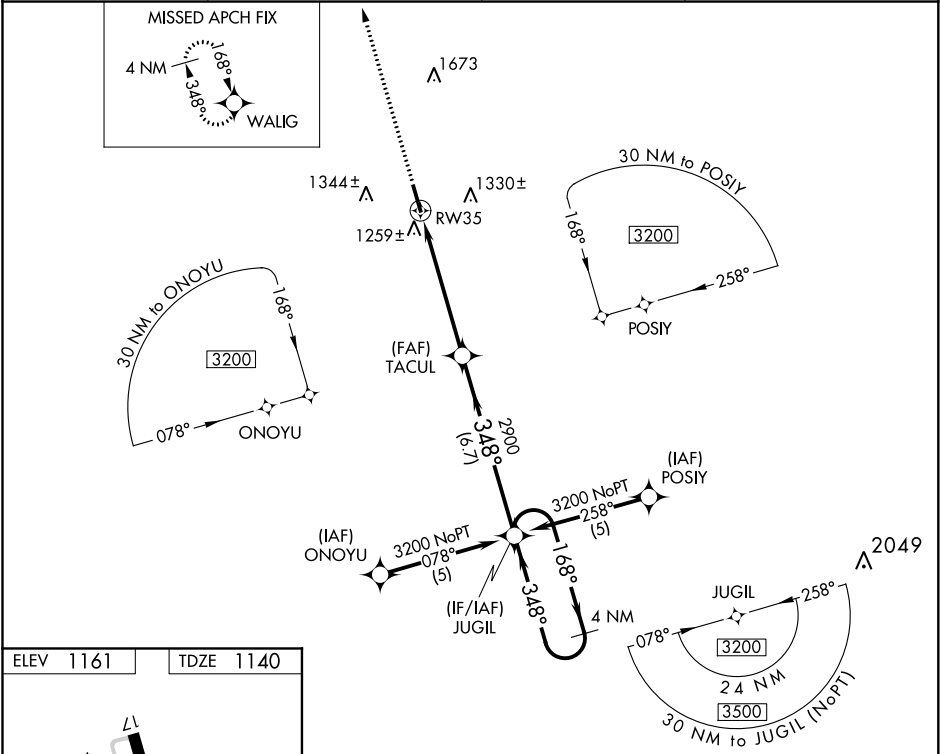
▼

▲

When local altimeter setting not received, use Newnan Coweta County altimeter setting and increase DA to 1480 feet and all visibilities ¼ mile; increase all MDA 100 feet and LNAV Cat C and Circling Cat C visibilities ¼ mile. DME/DME RNP-0.3 NA. VDP NA when using Newnan Coweta County altimeter setting.

MISSED APPROACH:
Climb to 3200 direct
WALIG and hold.

AWOS-3 118.175	ATLANTA APP CON 121.0 268.7	CLNC DEL 121.6	UNICOM 122.975 (CTAF) 0
--------------------------	---------------------------------------	--------------------------	-----------------------------------



ELEV 1161

TDZE 1140

HRL Rwy 17-35 0

3200	WALIG	VGSI and ILS glidepath not coincident (VGSI Angle 3.00/TCH 54).	4 NM Holding Pattern	
*LNAV only.	TACUL	JUGIL	3200	
*1.4 NM to RW35		348°	168°	
RW35		2900	GP 3.00° TCH 47	
1.4		4 NM	6.7 NM	
CATEGORY	A	B	C	D
LPV DA	1390-1 250 (300-1)			
LNAV/VNAV DA	NA			
LNAV MDA	1580-1 440 (500-1)	1580-1¼ 440 (500-1¼)	1580-1½ 440 (500-1½)	1580-1½ 440 (500-1½)
CIRCLING	1660-1 499 (500-1)	1680-1 519 (600-1)	1680-1½ 519 (600-1½)	1720-2 559 (600-2)