

VORTAC ODF

113.4

Chan 81

APP CRS

048°

Rwy Idg

4111

TDZE

1446

Apt Elev

1448

VOR RWY 6

HABERSHAM COUNTY(AJR)

▼

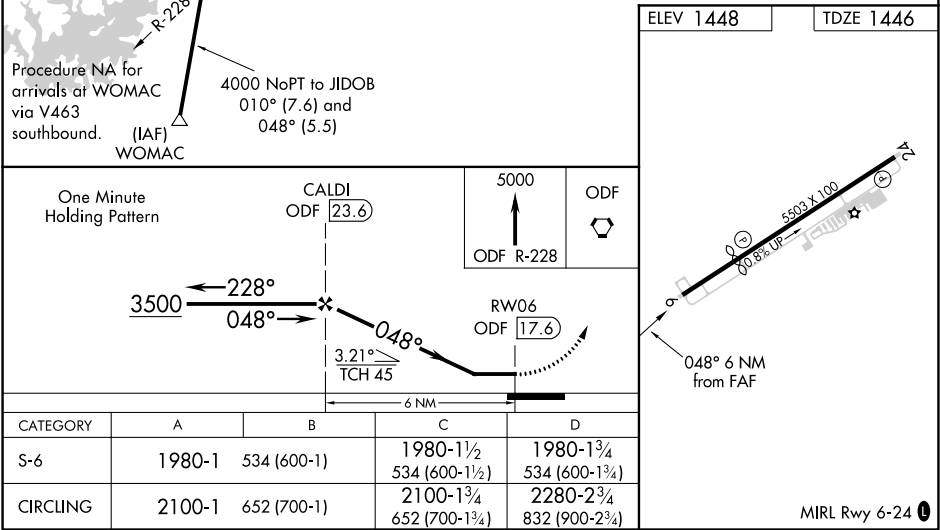
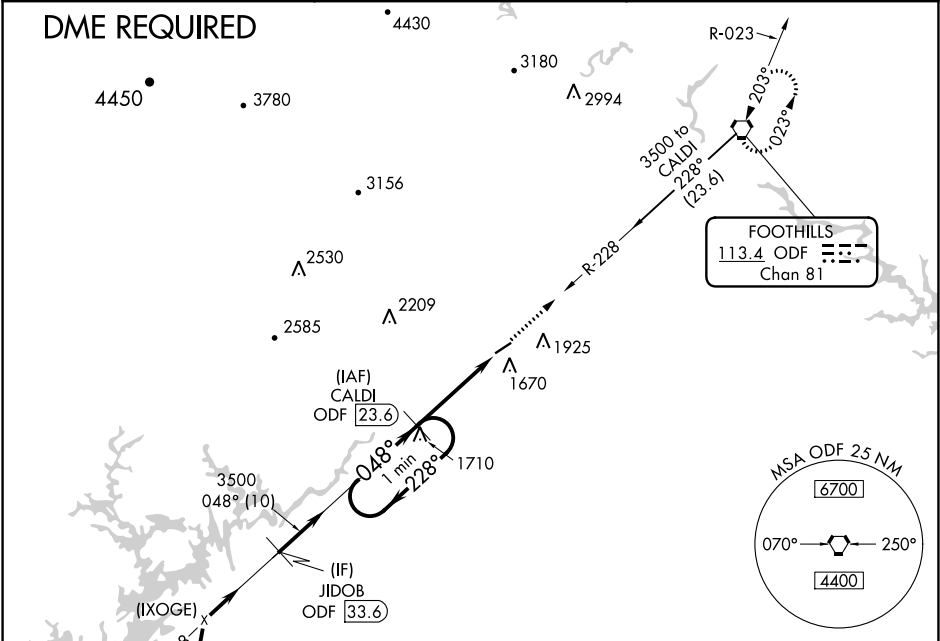
When local altimeter setting not received, use Gainesville altimeter setting and increase all MDA 80 feet and increase S-6 Cats C/D and Circling Cats C/D visibility ¼ mile.

▲ NA

Circling Rwy 24 NA at night. Rwy 6 helicopter visibility reduction below ¾ SM NA. Rwy 24 helicopter visibility reduction below 1 SM NA. DME required.

MISSED APPROACH: Climb to 5000 via ODF R-228 to ODF VORTAC and hold.

AWOS-3 119.175	ATLANTA CENTER 134.8 379.95	UNICOM 122.7 (CTAF) 0
-------------------	--------------------------------	--------------------------



SE-4, 03 DEC 2020 to 31 DEC 2020

SE-4, 03 DEC 2020 to 31 DEC 2020