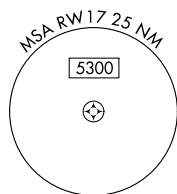
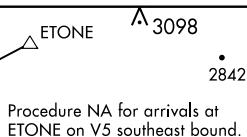
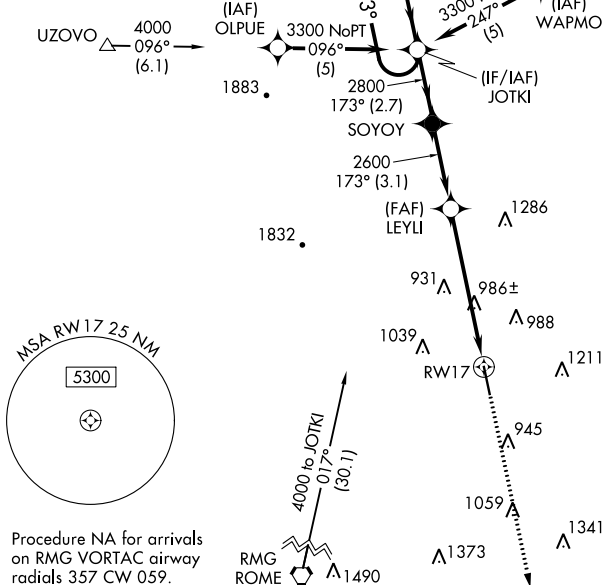
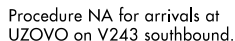


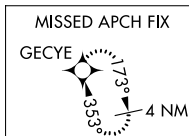
**RNAV (GPS) RWY 17**  
TOM B DAVID FIELD (CZL)

**V** Baro-VNAV and VDP NA when using Rome altimeter setting. For uncompensated Baro-VNAV systems, LNAV/VNAV NA below -15°C (5°F) or above 45°C (113°F). When local altimeter setting not received, use Rome altimeter setting and increase all DA 31 feet and all MDA 40 feet; increase LNAV/VNAV all Cats visibility and LNAV Cat C/D visibility ¼ mile, and Circling Cat C visibility ¼ mile. Rwy 17 helicopter visibility reduction below ¾ SM NA.

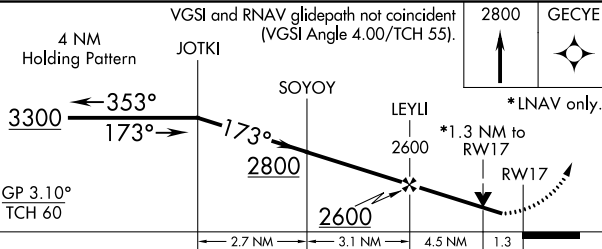
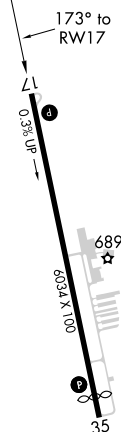
**MISSED APPROACH:**  
Climb to 2800 direct  
GECYE and hold.


UNICOM  
122.8 (CTAF) **L**

Procedure NA for arrivals  
on RMG VORTAC airway  
radials 357 CW 059.



ELEV 656		TDZE 639
----------	--	----------



CATEGORY		A		B		C		D	
LPV	DA	930-1		291 (300-1)					
INAV/ VNAV	DA	1100-1½		461 (500-1½)					
INAV	MDA	1240-1	601 (600-1)	1240-1¾		601 (600-1¾)			
 CIRCLING		1320-1	664 (700-1)	1580-2¾ 924 (1000-2¾)		1580-3 924 (1000-3)			

MIRL Rwy 17-35 **L**