

| | | |
|--|------------------------|---|
| WAAS CH 40315 W27A | APP CRS 274° | Rwy Idg TDZE 134 Apt Elev 141 |
|--|------------------------|---|

RNAV (GPS) RWY 27

DECATUR COUNTY INDUSTRIAL AIR PARK (BGE)

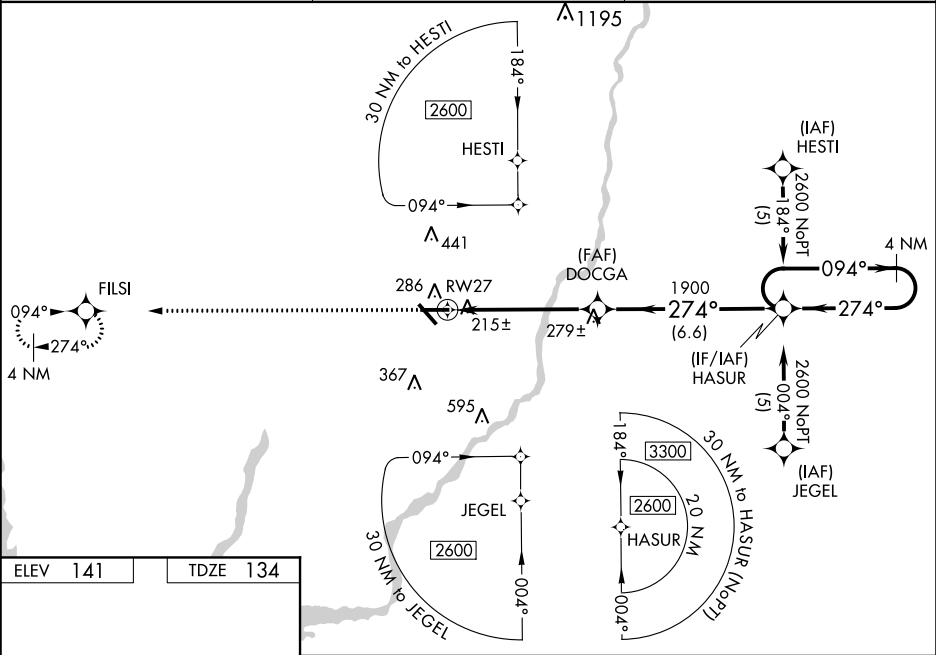
⚠

Baro-VNAV NA when using Tallahassee Intl altimeter setting. For uncompensated Baro-VNAV systems, LNAV/VNAV NA below -15°C (5°F) or above 48°C (118°F). DME/DME RNP-0.3 NA. Visibility reduction by helicopters NA. VDP NA when using Tallahassee Intl altimeter setting. When local altimeter setting not received, use Tallahassee Intl altimeter setting and increase all DA 95 feet and all MDA 100 feet; increase LNAV/VNAV all Cats visibility ½ mile and LNAV Cat C visibility ¼ mile. For inoperative MALSR increase LNAV Cat D visibility to 1¼ mile. For inoperative MALSR, when using Tallahassee Intl altimeter setting increase LPV all Cats visibility to 1 mile.

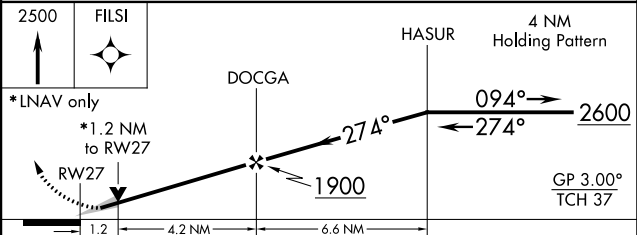
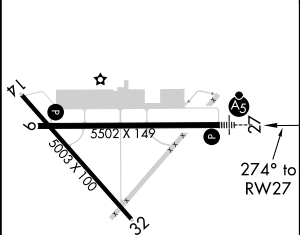
MALSR

MISSED APPROACH:
Climb to 2500 direct
FISLI and hold.

| | | |
|----------------------------|--|-----------------------------------|
| AWOS-3PT 121.125 | TALLAHASSEE APP CON★ 128.7 254.3 | UNICOM 122.975 0 (CTAF) |
|----------------------------|--|-----------------------------------|



| | |
|-----------------|-----------------|
| ELEV 141 | TDZE 134 |
|-----------------|-----------------|



| CATEGORY | A | | B | | C | | D | |
|------------------|-------|--|-------------|--|------------------------|--|----------------------|--|
| LPV DA | | | 334-½ | | 200 (200-½) | | | |
| LNAV/ VNAV DA | | | 556-1 | | 422 (500-1) | | | |
| LNAV MDA | 540-½ | | 406 (400-½) | | 540-¾ 406 (400-¾) | | 540-1 406 (400-1) | |
| CIRCLING | 600-1 | | 459 (500-1) | | 600-1½ 459 (500-1½) | | 700-2 559 (600-2) | |