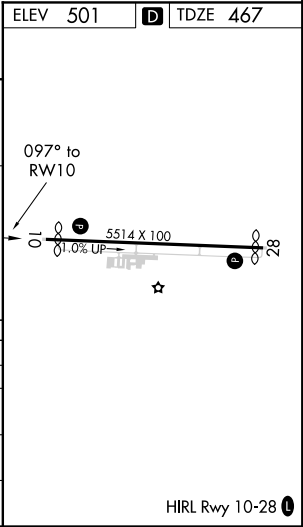
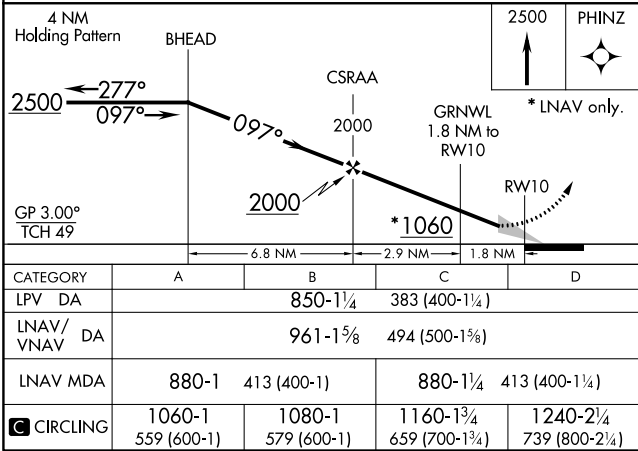
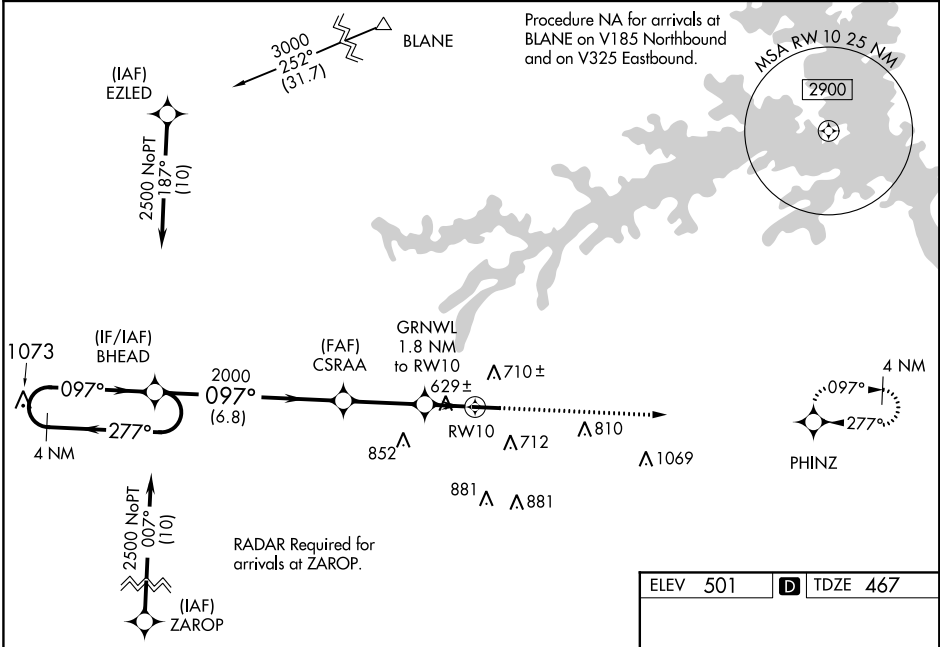


WAAS CH 56521 W10A	APP CRS 097°	Rwy Idg TDZE Apt Elev	5215 467 501
--	------------------------	-----------------------------	---

RNAV (GPS) RWY 10

THOMSON-McDUFFIE COUNTY (HQU)

RNP APCH.		MISSED APPROACH: Climb to 2500 direct PHINZ and hold.
AWOS-3 120.625	AUGUSTA APP CON ★ 126.8 270.3	
		UNICOM 122.8 (CTAF) 0



SE-4, 03 DEC 2020 to 31 DEC 2020

SE-4, 03 DEC 2020 to 31 DEC 2020