

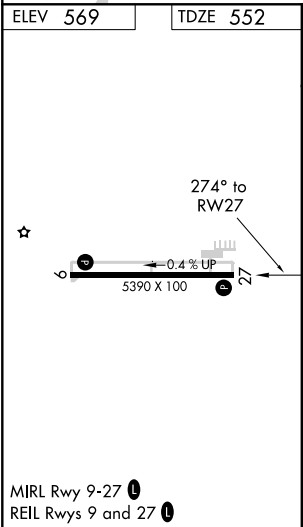
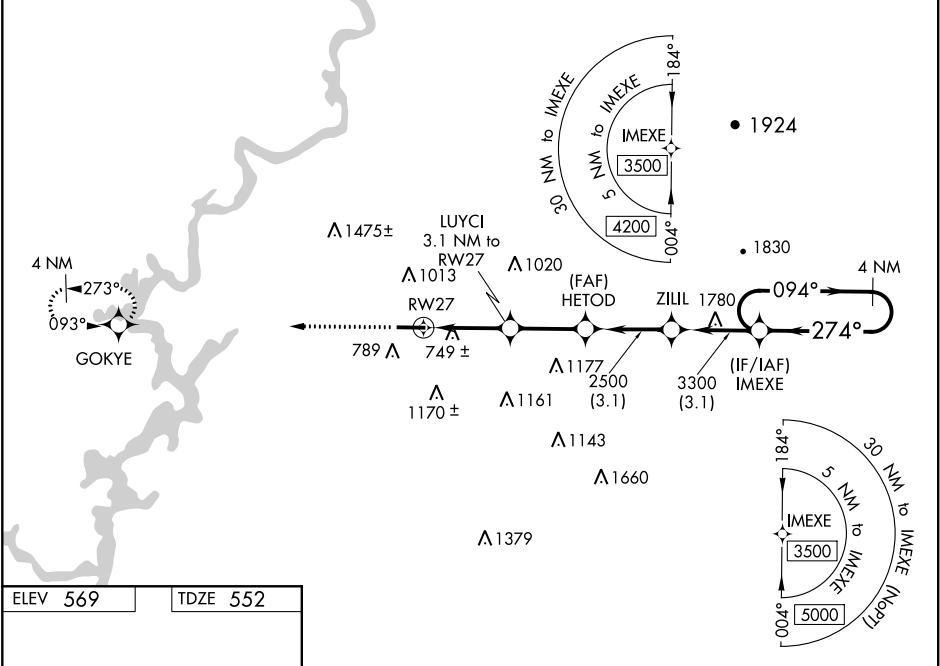
WAAS CH 90216 W27A	APP CRS 274°	Rwy Idg 5390 TDZE 552 Apt Elev 569
--	------------------------	---

RNAV (GPS) RWY 27
MERKEL FIELD SYLAUCA MUNI (SCD)

▼ For uncompensated Baro-VNAV systems, LNAV/VNAV NA below -16°C (4°F) or above 48°C (118°F). Baro-VNAV and VDP NA when using Birmingham altimeter setting.
▲ DME/DME RNP-0.3 NA. When local altimeter setting not received, use Birmingham altimeter setting and increase LPV DA to 889 feet, LNAV/VNAV DA to 1161 feet, and all visibilities ¾ mile. Increase all MDA 100 feet and LNAV Cat C and D visibilities ¼ mile.

MISSED APPROACH:
Climb to 3200 direct
GOKYE and hold.

AWOS-3PT 119.125	BIRMINGHAM APP CON 123.8 256.8	UNICOM 122.8 (CTAF) 0
----------------------------	--	---------------------------------



3200	GOKYE	VGSi and RNAV glidepath not coincident (VGSi Angle 3.00/TCH 40).		4 NM
*LNAV only:		LUYCI 3.1 NM to RWY 27	HETOD 2500	ZILIL 3300
RWY 27		*1.3 NM to RWY 27	*1600	2500
1.3 NM		1.8 NM	2.7 NM	3.1 NM
CATEGORY	A	B	C	D
LPV DA	802-¾		250 (300-¾)	
LNAV/VNAV DA	1074-1¾		522 (600-1¾)	
LNAV MDA	1000-1 448 (500-1)		1000-1¾ 448 (500-1¾)	
CIRCLING	1140-1 571 (600-1)	1400-1¼ 831 (900-1¼)	1620-3 1051 (1100-3)	1700-3 1131 (1200-3)