

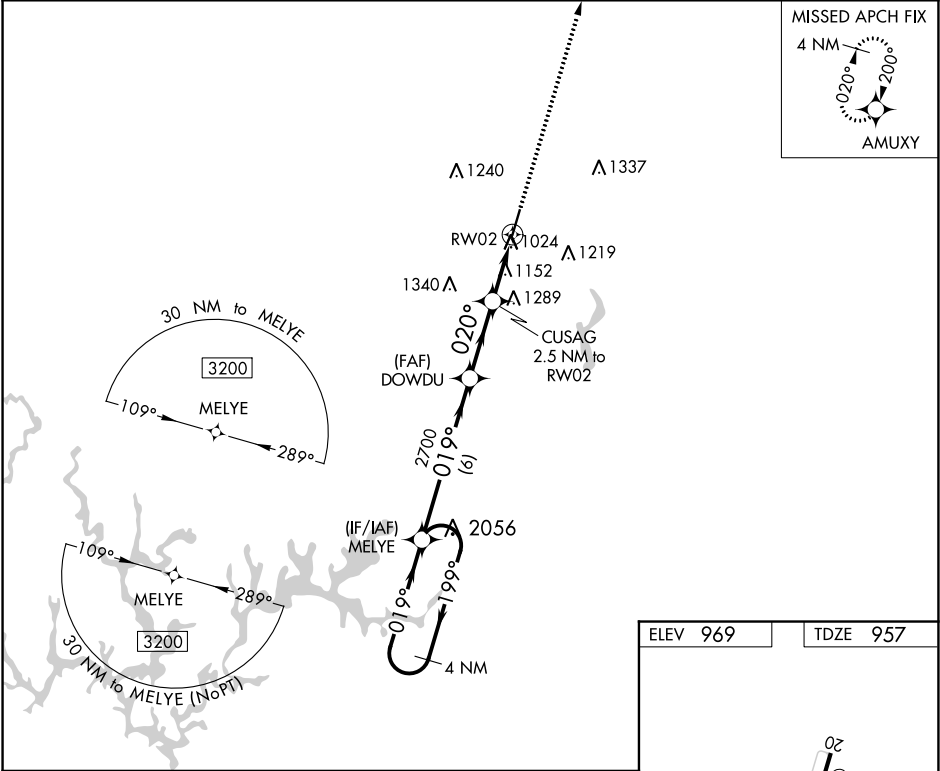
WAAS CH 58235 W02A	APP CRS 020°	Rwy Idg TDZE 957 Apt Elev 969
--	------------------------	---

RNAV (GPS) RWY 2
CULLMAN RGNL-FOLSOM FIELD (CMD)

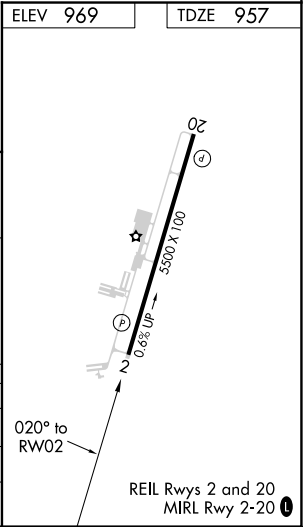
⚠ DME/DME RNP-0.3 NA. When local altimeter setting not received, use Huntsville Intl-Carl T. Jones Field altimeter setting and increase all MDA 100 feet, and increase LP, LNAV Cat C and D visibility $\frac{3}{8}$ SM, increase Circling Cat C and D visibility $\frac{1}{4}$ SM. Rwy 2 helicopter visibility reduction below 1 SM NA. Straight-in and Circling Rwy 2 NA at night.

MISSSED APPROACH:
Climb to 3700 direct AMUXY and hold.

AWOS-3PT 124.175	HUNTSVILLE APP CON ★ 118.05 239.0	GCO 121.725	UNICOM 122.8 (CTAF) 0
----------------------------	---	-----------------------	---------------------------------



4 NM Holding Pattern		MELYE	Visual Segment - Obstacles.		3700	AMUXY
3200		199°	019°	019°	020°	
		6 NM	2.9 NM	2.5 NM		
CATEGORY	A	B	C	D		
LP MDA	1420-1	463 (500-1)	1420-1 $\frac{3}{8}$	463 (500-1 $\frac{3}{8}$)		
LNAV MDA	1440-1	483 (500-1)	1440-1 $\frac{3}{8}$	483 (500-1 $\frac{3}{8}$)		
C CIRCLING	1440-1 471 (500-1)	1500-1 531 (600-1)	1600-1 $\frac{3}{4}$ 631 (700-1 $\frac{3}{4}$)	1640-2 $\frac{1}{4}$ 671 (700-2 $\frac{1}{4}$)		



SE-4, 03 DEC 2020 to 31 DEC 2020

SE-4, 03 DEC 2020 to 31 DEC 2020