

WAAS CH 40033 W08A	APP CRS 084°	Rwy Idg 5004 TDZE 170 Apt Elev 176
--	------------------------	---

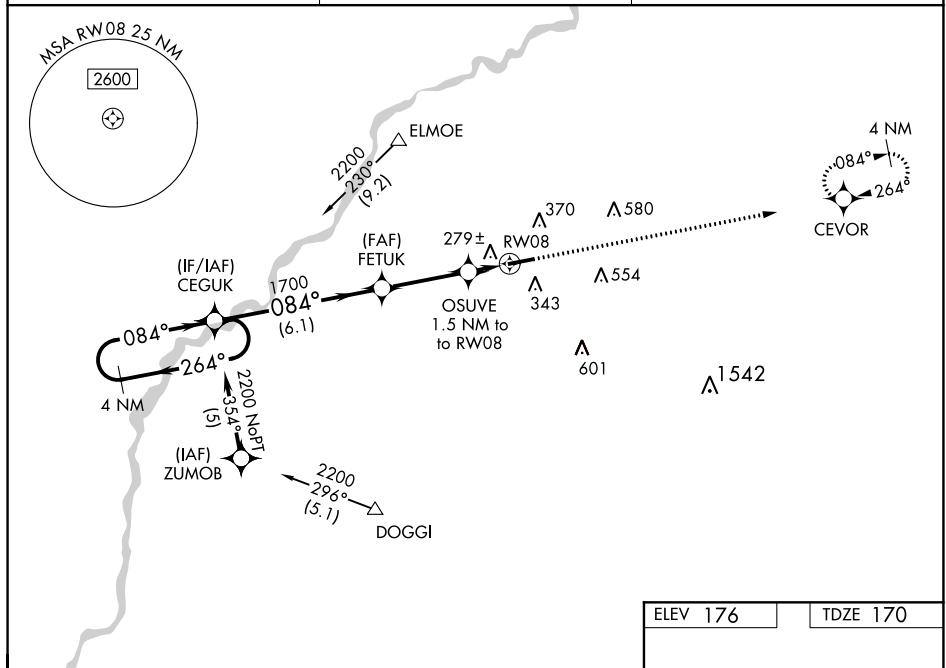
RNAV (GPS) RWY 8

CAMILLA-MITCHELL COUNTY (CXU)

Baro-VNAV NA when using Albany altimeter setting. For uncompensated Baro-VNAV systems, LNAV/VNAV NA below -15°C (5°F) or above 54°C (130°F). DME/DME RNP-0.3 NA. When local altimeter setting not received, use Albany altimeter setting and increase all DA 48 feet and all MDA 60 feet; increase LPV and LNAV/VNAV visibility ½ mile and increase LNAV Cat C and D and Circling Cat C visibility ¼ mile. Helicopter visibility reduction below 1 SM NA. Rwy 8 Straight-in and Circling minimums NA at night.

MISSED APPROACH:
Climb to 2400 direct
CEVOR and hold.

AWOS-3T 118.675	JACKSONVILLE CENTER 125.75 226.8	UNICOM 122.8 (CTAF) ①
---------------------------	--	---------------------------------



CATEGORY	A	B	C	D
LPV DA	465-1	295 (300-1)		
RNAV/DA	575-1 $\frac{3}{8}$	405 (400-1 $\frac{3}{8}$)		
RNAV MDA	540-1	370 (400-1)		
CIRCLING	720-1	544 (600-1)	720-1 $\frac{1}{2}$ 544 (600-1 $\frac{1}{2}$)	760-2 584 (600-2)

REIL Rwy 8 and 26
MIRL Rwy 8-26