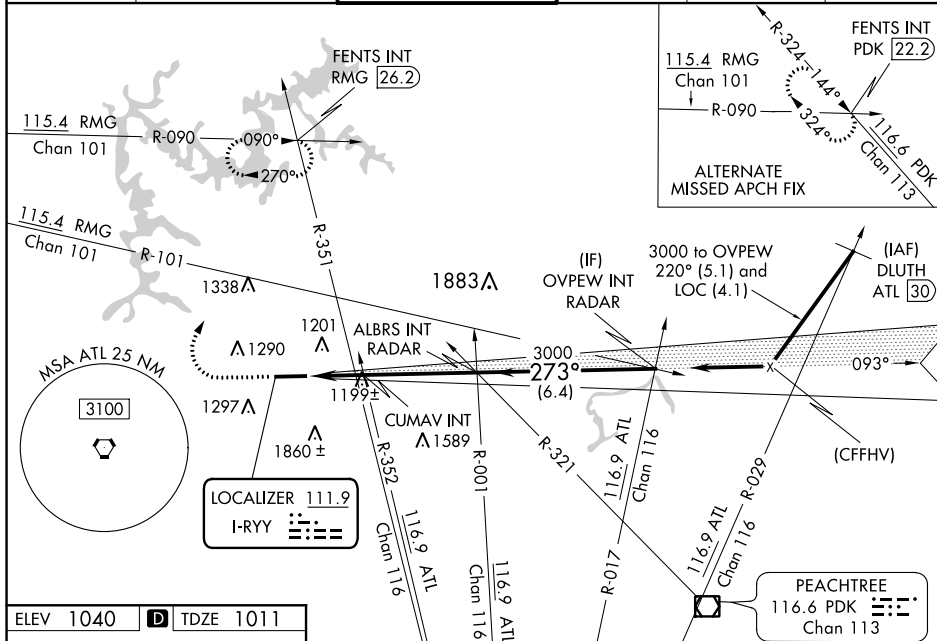


ILS or LOC RWY 27
COBB COUNTY INTL-McCOLLUM FIELD (RYY)

MISSED APPROACH: Climb to 1600 then climbing right turn to 4000 on heading 050° and ATIS VORTAC R-351 to FENTS INT/RMG 26.2 DME and hold, continue climb-in-hold to 4000.

▼ Circling to Rwy 9 NA at night. When local altimeter setting not received, use Hartsfield-Jackson Atlanta Intl altimeter setting and increase all DA/MDA 60 feet; increase S-LS 27 all Cats and CUMAV fix minimums S-LOC 27 Cats C and D visibility $\frac{1}{2}$ mile; increase S-LOC 27 Cat B, Circling Cat C, and CUMAV fix minimums Circling Cat C visibility $\frac{1}{2}$ mile; increase S-LOC 27 Cats C and D visibility $\frac{1}{2}$ mile.

UNICOM
122.7

273° 6.1 NM
from FAF

TWR
1168

6295 X 100

0.7% UP

27

HIRL Rwy 9-27

FAF to MAP 6.1 NM					
Knots	60	90	120	150	180
Min:Sec	6:06	4:04	3:03	2:26	2:02

