

ELBERTON, GEORGIA

AL-6567 (FAA)

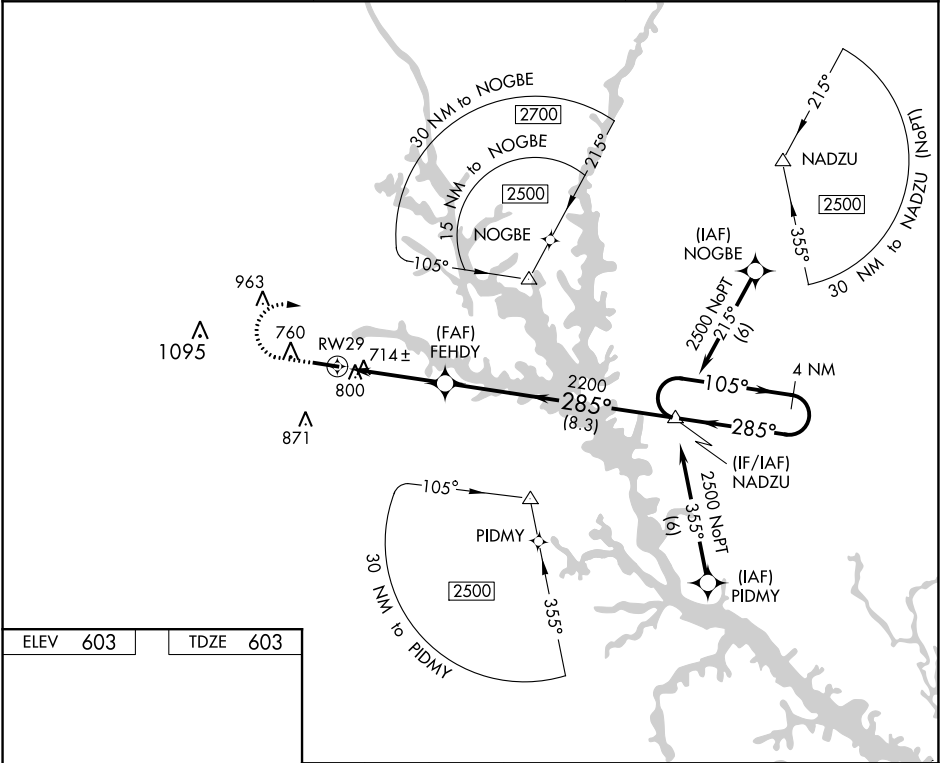
19059

WAAS CH 45735 W29A	APP CRS 285°	Rwy Idg TDZE Apt Elev	5004 603 603
--	------------------------	-----------------------------	---

RNAV (GPS) RWY 29
ELBERT COUNTY-PATZ FIELD (EBA)

<p>⚠ DME/DME RNP-0.3 NA. When local altimeter not received, use Anderson altimeter setting and increase all MDA 100 feet. Increase LP Cat C and LNAV Cat C visibility ¾ mile and Circling Cat C visibility ½ mile. Procedure NA at night. Helicopter visibility reduction below 1 SM NA.</p>	<p>MISSED APPROACH: Climb to 1100 then climbing right turn to 2500 direct NADZU and hold.</p>
---	--

AWOS-3 118.15	ATLANTA CENTER 127.5 316.05	UNICOM 122.8 (CTAF) 0
-------------------------	---------------------------------------	---------------------------------



ELEV 603	TDZE 603	1100 2500 NADZU				Descent angle NA.	NADZU	4 NM Holding Pattern
		FEH DY						
		2200						
		3.9 NM 8.3 NM						
CATEGORY	A	B	C	D				
LP MDA	980-1 377 (400-1)				NA			
LNAV MDA	1100-1 497 (500-1)				1100-1 497 (500-1 3/8)			
CIRCLING	1160-1 557 (600-1)				1340-2 737 (800-2)			

ELBERTON, GEORGIA

Amdt 1A 11DEC14

34°06'N-82°49'W

ELBERT COUNTY-PATZ FIELD (EBA)
RNAV (GPS) RWY 29

SE-4, 03 DEC 2020 to 31 DEC 2020

SE-4, 03 DEC 2020 to 31 DEC 2020