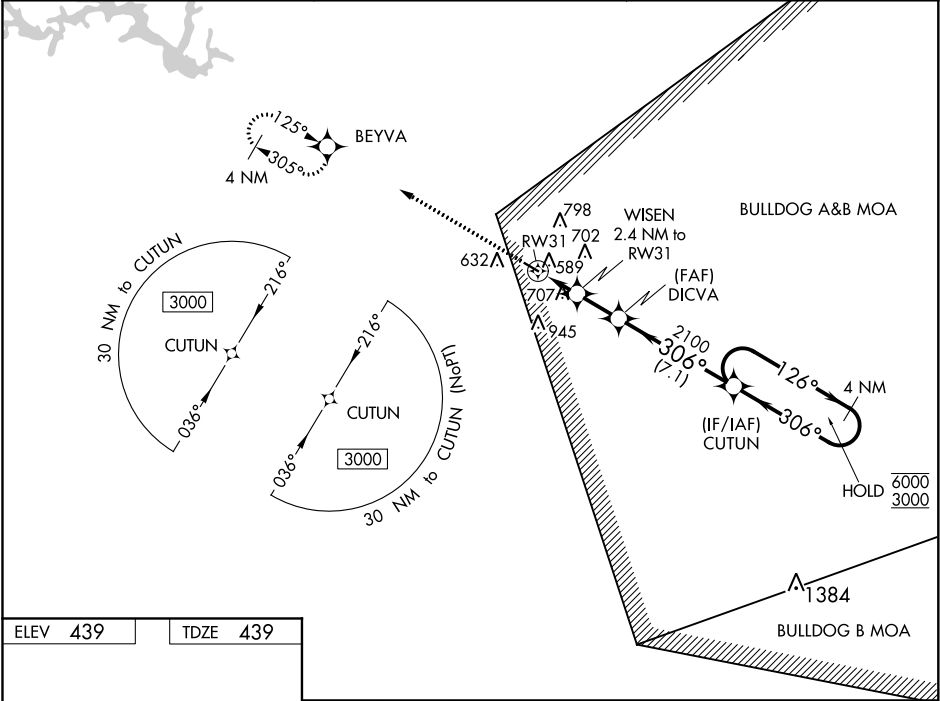


WAAS CH <b>72721</b> <b>W31A</b>	APP CRS <b>306°</b>	Rwy Idg TDZE <b>439</b> Apt Elev <b>439</b>	<b>5015</b>
--	------------------------	---	-------------

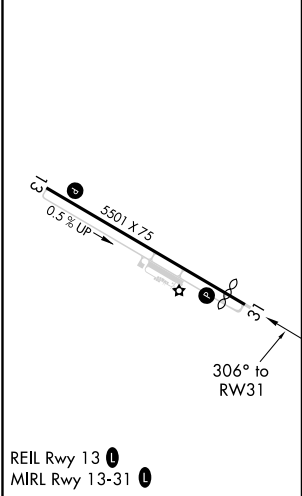
**RNAV (GPS) RWY 31**  
KAOLIN FIELD (OKZ)

RNP APCH. ▼ Rwy 31 helicopter visibility reduction below ¾ SM NA. ▲ For uncompensated Baro-VNAV systems, LNAV/VNAV NA below -15°C or above 54°C.	MISSED APPROACH: Climb to 2900 direct BEYVA and hold.
--	---

AWOS-3 <b>120.575</b>	ATLANTA APP CON ★ <b>124.2 279.6</b>	UNICOM <b>123.0 (CTAF) 0</b>
--------------------------	---	---------------------------------



ELEV <b>439</b>	TDZE <b>439</b>
-----------------	-----------------



2900	BEYVA	VGSI and RNAV glidepath not coincident (VGSI Angle 3.60/TCH 41).			
*LNAV only.	WISEN 2.4 NM to RW31	DICVA 2100	CUTUN 4 NM Holding Pattern	6000	3000
	*1.3 NM to RW31	1260*	2100	GP 3.00°	TCH 45
	1.3 NM	1.2 NM	2.6 NM	7.1 NM	
CATEGORY	A	B	C	D	
LPV DA	738-7/8	299 (300-7/8)		NA	
LNAV/VNAV DA	848-1 1/8	409 (500-1 1/8)		NA	
LNAV MDA	960-1	521 (600-1)	960-1 1/2	521 (600-1 1/2)	NA
CIRCLING	1000-1	1120-1	1240-2 1/4	801 (900-2 1/4)	NA
	561 (600-1)	681 (700-1)			