

WAAS CH 99503 W27A	APP CRS 270°	Rwy Idg TDZE Apt Elev	6500 17 17
--	------------------------	-----------------------------	---------------------------------------

RNAV (GPS) RWY 27
JACK EDWARDS NATIONAL (JKA)

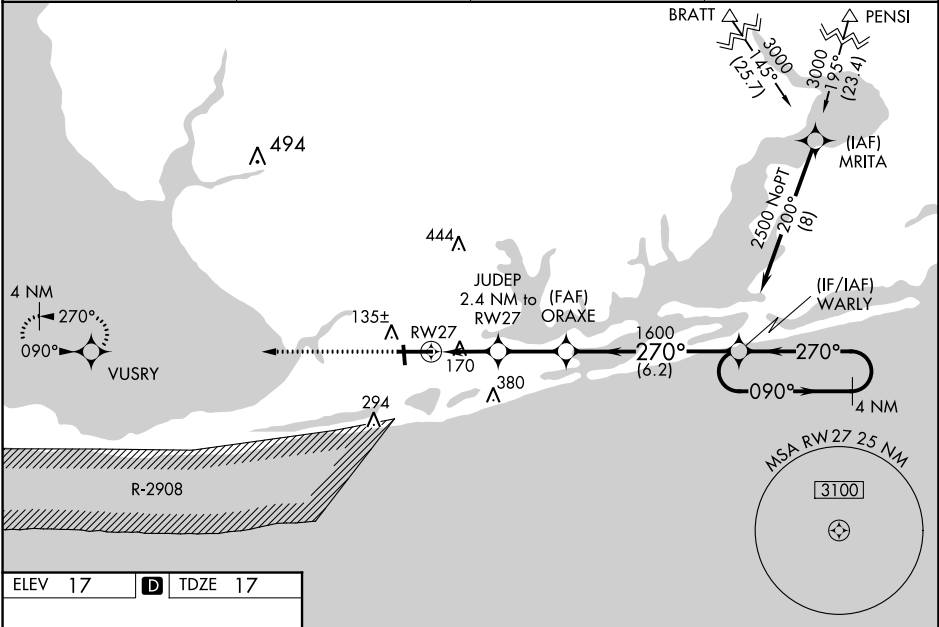
For uncompensated Baro-VNAV systems, LNAV/VNAV NA below -1.5°C (5°F) or above 54°C (130°F). Baro-VNAV and VDP NA when using Pensacola Intl altimeter setting.

⚠ Circling Rwy 17, 35 NA at night. DME/DME RNP-0.3 NA. When local altimeter setting not received, use Pensacola Intl altimeter setting and increase LPV DA to 295 feet; increase LNAV/VNAV DA to 559 feet and all visibilities ¼ SM; increase all MDAs 80 feet and visibility Cats C and D ¼ SM. For inop ALS, increase LNAV Cat C/D visibility to 1½ SM. For inop ALS, when using Pensacola Intl altimeter setting minimums, increase LPV all Cats visibility to ¾ SM, increase LNAV Cats C/D visibility to 1½ SM.

MALSR

MISSED APPROACH:
Climb to 2500 direct
VUSRY and hold.

AWOS-3PT 134.525	PENSACOLA APP CON 120.65 270.8	CLNC DEL 124.55	UNICOM 122.7 (CTAF) 0
----------------------------	--	---------------------------	---------------------------------



ELEV 17 **D** TDZE 17

MIRL Rwy 17-35 **0**
HIRL Rwy 9-27 **0**

2500 VUSRY

*LNAV only.

JUDEP 2.4 NM to RW27
ORAXE 1600
WARLY 4 NM Holding Pattern

270° to RW27

*1.1 NM to RW27

*820

1600

GP 3.00° TCH 47

CATEGORY	A	B	C	D
LPV DA	217-½ 200 (200-½)			
LNAV/VNAV DA	481-1½ 464 (500-1½)			
LNAV MDA	420-½ 403 (500-½)		420-¾ 403 (500-¾)	
C CIRCLING	480-1 463 (500-1)		740-2 723 (800-2) 740-2¼ 723 (800-2¼)	

SE-4, 03 DEC 2020 to 31 DEC 2020

SE-4, 03 DEC 2020 to 31 DEC 2020