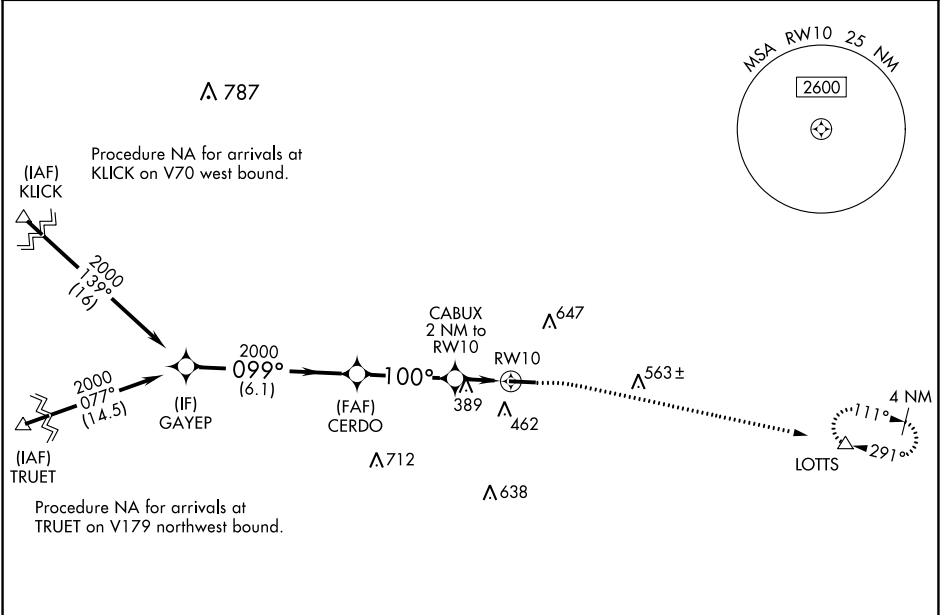


|  |                        |                             |   |
|--|------------------------|-----------------------------|---|
| WAAS<br>CH <b>53738</b><br><b>W10A</b> | APP CRS<br><b>100°</b> | Rwy Idg<br>TDZE<br>Apt Elev | <b>5001</b><br><b>197</b><br><b>197</b> |
|--|------------------------|-----------------------------|---|

RNAV (GPS) RWY 10  
METTER MUNI (MHP)

|   |                              |  |                                 |
|---|------------------------------|--|---------------------------------|
| Baro-VNAV NA. DME/DME RNP-0.3 NA. Helicopter visibility reduction below ¼ SM NA. Use Claxton altimeter setting; when not received, use Vidalia altimeter setting and increase LPV DA to 543, LNAV/VNAV DA to 500, increase all MDA 20 feet, increase LNAV Cat C/D visibility ½ mile and Circling Cat C/D visibility ¼ mile. |                              | MISSED APPROACH: Climb to 700 then climbing right turn to 3000 direct LOTS and hold. |                                 |
| AWOS-3PT<br><b>120.3</b>  | CWV AWOS-3<br><b>120.075</b> | JACKSONVILLE CENTER<br><b>132.925 363.2</b>  | UNICOM<br><b>123.0 (CTAF) 0</b> |



|  |                      |                      |                         |                         |
|--|----------------------|----------------------|-------------------------|-------------------------|
| <div><div>ELEV 197</div><div>TDZE 197</div></div>  |                      |                      |                         |                         |
| <div><div><div>VGSI and RNAV glidepath not coincident<br/>[VGSI Angle 3.00/TCH 32].</div><div><div><div>700</div><div>3000</div><div>LOTS</div></div><div><div>↑</div><div>↷</div><div>△</div></div><div>*LNAV only.</div></div><div><div><div><div>GAYEP</div><div>CERDO</div></div><div><div>2000</div><div>2000</div><div>2000</div><div>100°</div><div>100°</div><div>*880</div><div>RW10</div></div><div><div>GP 3.00°<br/>TCH 60</div><div>099°</div><div>100°</div></div><div><div>6.1 NM</div><div>3.5 NM</div><div>2 NM</div></div></div></div></div></div> |                      |                      |                         |                         |
| CATEGORY   | A                    | B                    | C                       | D                       |
| LPV DA   | 537-1½               |                      | 340 (400-1½)            |                         |
| LNAV/<br>VNAV DA   | 494-1                |                      | 297 (300-1)             |                         |
| LNAV MDA   | 700-1                | 503 (600-1)          | 700-1¾                  | 503 (600-1¾)            |
| CIRCLING   | 820-1<br>623 (700-1) | 880-1<br>683 (700-1) | 1060-2½<br>863 (900-2½) | 1060-2¾<br>863 (900-2¾) |
| <div><div>MIRL Rwy 10-28</div><div>REIL Rwy 10</div></div>   |                      |                      |                         |                         |

SE-4, 03 DEC 2020 to 31 DEC 2020

SE-4, 03 DEC 2020 to 31 DEC 2020