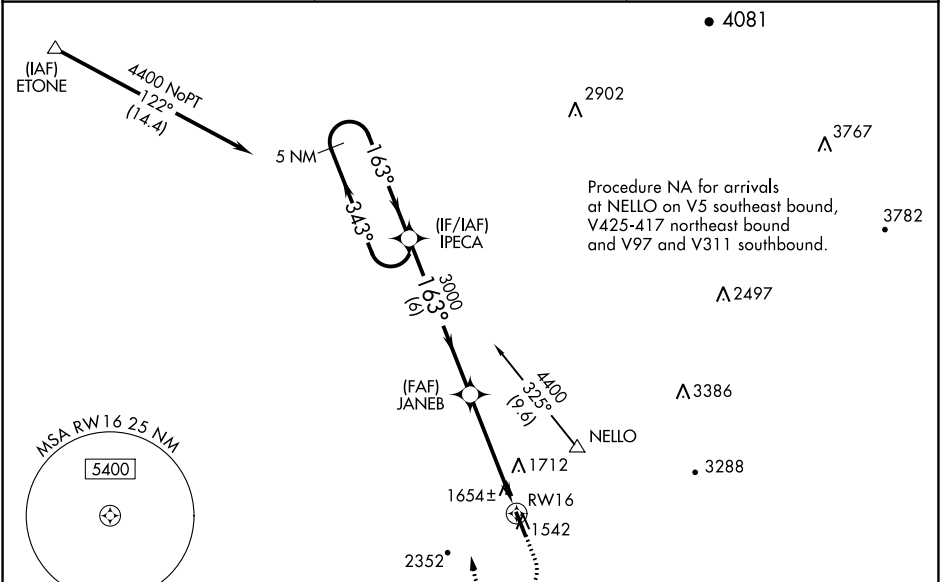


WAAS CH <b>82005</b> <b>W16A</b>	APP CRS <b>163°</b>	Rwy Idg TDZE <b>1515</b> Apt Elev <b>1535</b>
--	------------------------	---

RNAV (GPS) RWY 16  
PICKENS COUNTY (JZP)

<div><div>NA</div><div>Baro-VNAV NA when using Canton altimeter setting. For uncompensated Baro-VNAV systems, LNAV/VNAV NA below -18°C (0°F) or above 54°C (130°F). DME/DME RNP-0.3 NA. Helicopter visibility reduction below ¾ SM NA. When local altimeter setting not received, use Canton altimeter setting and increase LPV DA to 1976 LNAV/VNAV DA to 1889 and all MDA 80 feet, increase LPV all Cts visibility to 1½, LNAV/VNAV all Cts visibility to 1¾, LNAV Cat C visibility to 1¾ and Circling Cat C visibility to 2¾.</div></div>	<div>MISSED APPROACH: Climb to 3000 then climbing right turn to 4400 direct IPECA and hold.</div>
--	---

AWOS-3PT <b>118.55</b>	ATLANTA CENTER <b>133.1 342.425</b>	UNICOM <b>122.725</b> (CTAF)
---------------------------	--	---------------------------------



VGSI and RNAV glidepath not coincident (VGSI Angle 3.00/TCH 30).		3000	4400	IPECA
5 NM Holding Pattern		↑	↷	✧
GP 3.00° TCH 40		3000	3000	RW16
6 NM		4.6 NM		
CATEGORY	A	B	C	D
LPV DA	1925-1¾ 410 (400-1¾)			NA
LNAV/VNAV DA	1838-1½ 323 (400-1½)			NA
LNAV MDA	1980-1	465 (500-1)	1980-1¾ 465 (500-1¾)	NA
CIRCLING	1980-1 445 (500-1)	2160-1 625 (700-1)	2360-2½ 825 (900-2½)	NA

ELEV 1535

TDZE 1515

163° to RWY 16

0-7 A/P

5000 X 100

34

MIRL Rwy 16-34

SE-4, 03 DEC 2020 to 31 DEC 2020

SE-4, 03 DEC 2020 to 31 DEC 2020