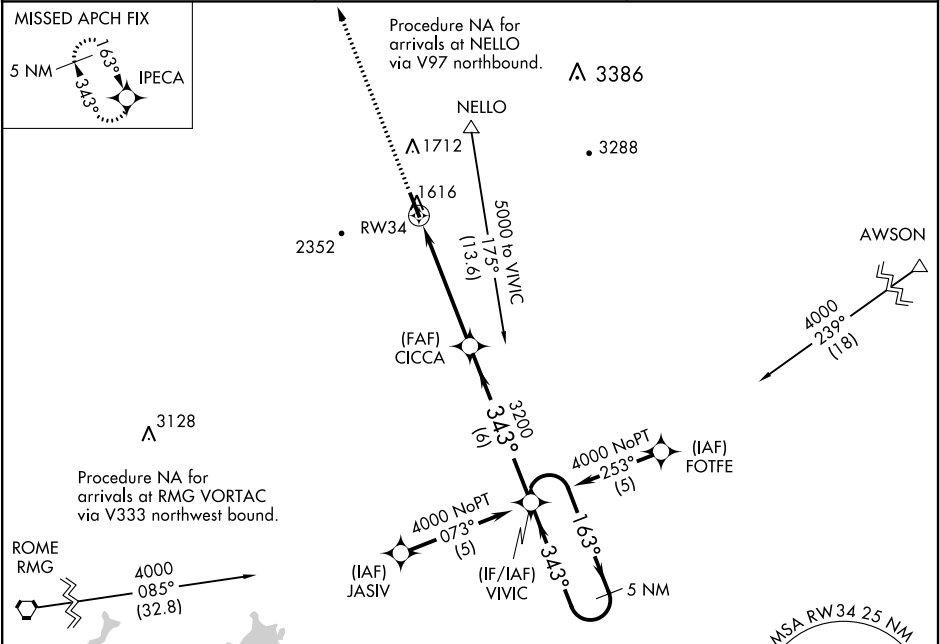


WAAS CH 77705 W34A	APP CRS 343°	Rwy Idg TDZE 1535 Apt Elev 1535
--	------------------------	---

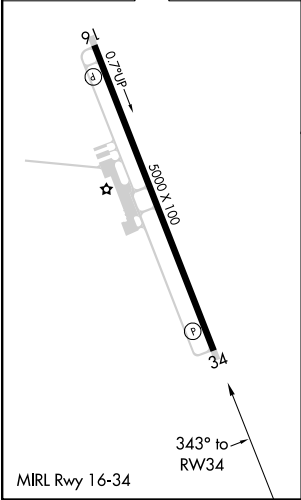
RNAV (GPS) RWY 34
PICKENS COUNTY (JZP)

NA	DME/DME RNP-0.3 NA. Visibility reduction by helicopters NA. If local altimeter setting not received, use Cobb County Intl-McCollum Field altimeter setting and increase all LPV DAs to 1922/MDAs 140 feet.	MISSED APPROACH: Climb to 5400 direct IPECA and hold, continue climb-in-hold to 5400.
----	--	---

AWOS-3PT 118.55	ATLANTA CENTER 133.1 342.425	UNICOM 122.725 (CTAF)
---------------------------	--	---------------------------------



ELEV 1535	TDZE 1535
------------------	------------------



5400	IPECA	VGSI and RNAV glidepath not coincident (VGSI Angle 3.00/TCH 27).		5 NM Holding Pattern
RW34		CICCA	VIVIC	163° → 4000 ← 343°
		3200		GP 3.00° TCH 40
5 NM		6 NM		
CATEGORY	A	B	C	D
LPV DA	1789-1 254 (300-1)		NA	
LNAV MDA	1880-1 345 (400-1)		NA	
CIRCLING	1960-1 425 (500-1)	2160-1 625 (700-1)	2360-2½ 825 (900-2½)	NA