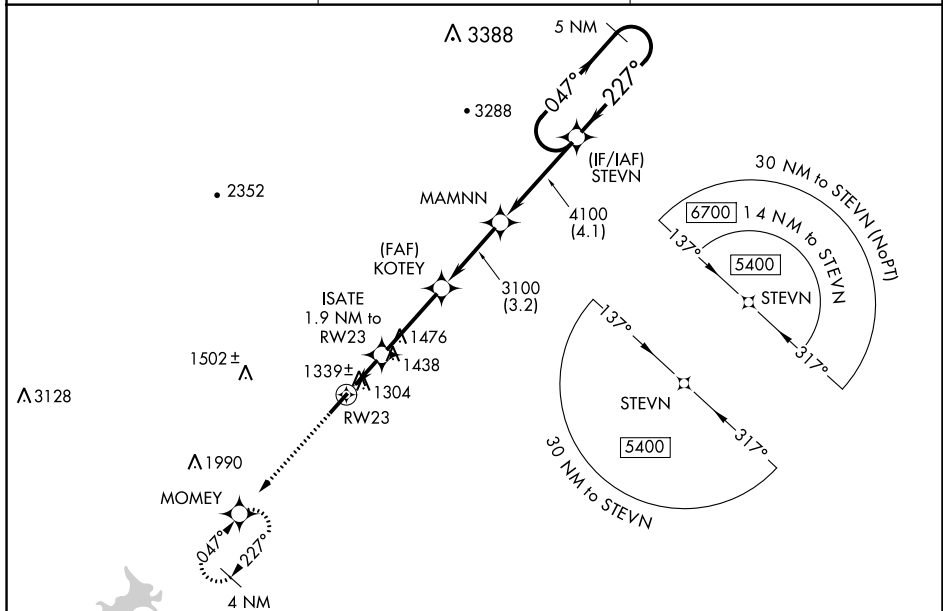


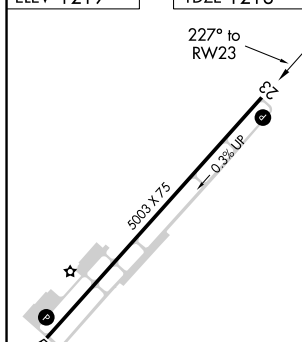
RNAV (GPS) RWY 23
CHEROKEE COUNTY RGNL (CNI)


MISSED APPROACH: Climb to 4000 direct MOMEY and hold, continue climb-in-hold to 4000.

UNICOM
123.0 (CTAF) 



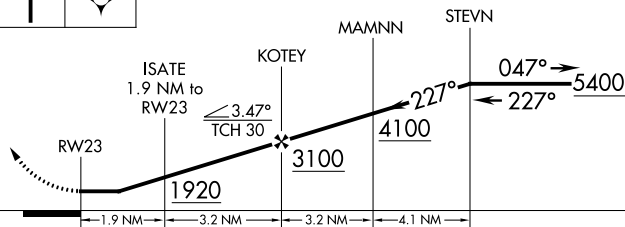
TDZE 1218



4000	MONEY
↑	

VGSI and descent angles not coincident
(VGSI Angle 3.00/TCH 32).

5 NM
Holding Pattern



CATEGORY	A	B	C	D
LP MDA	1600-1	382 (400-1)	1600-1 $\frac{1}{8}$ 382 (400-1 $\frac{1}{8}$)	NA
LNAV MDA	1740-1	522 (600-1)	1740-1 $\frac{1}{8}$ 522 (600-1 $\frac{1}{8}$)	NA
CIRCLING	1740-1	521 (600-1)	1740-1 $\frac{1}{8}$ 521 (600-1 $\frac{1}{8}$)	NA

MIRL Rwy 5-23 **L**

CHEROKEE COUNTY RGNL (CNI)
RNAV (GPS) RWY 23