

APP CRS	Rwy Idg	<b>5500</b>
<b>057°</b>	TDZE	<b>861</b>
	Apt Elev	<b>882</b>

## RNAV (GPS) RWY 6

HENRY COUNTY (HMP)

RNP APCH

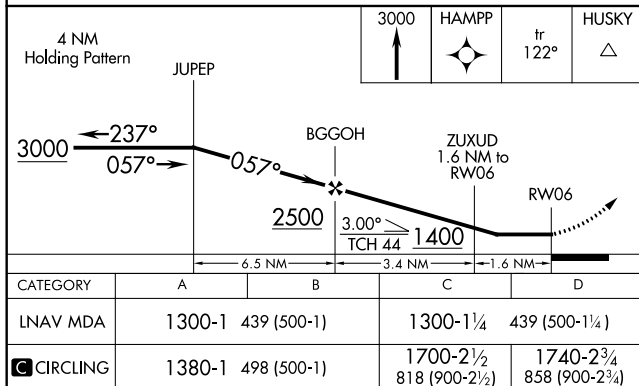
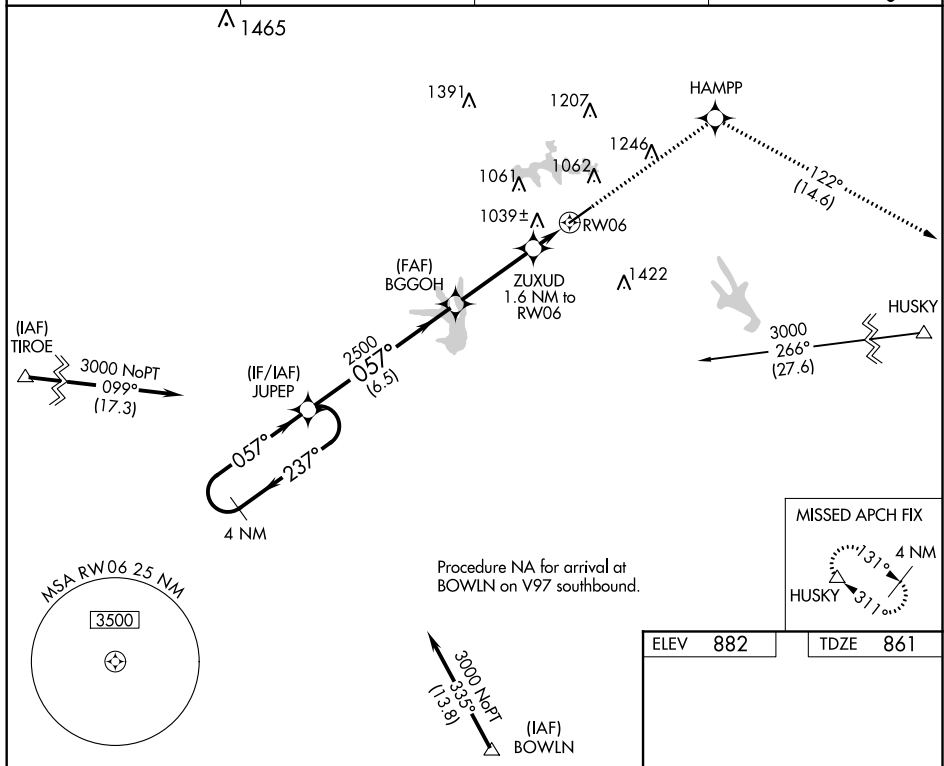
**NA** When local altimeter setting not received, use Hartsfield-Jackson Atlanta Intl altimeter setting and increase all MDA 60 feet; increase LNAV Cats C/D visibility  $\frac{1}{8}$  mile and Circling Cat D visibility  $\frac{1}{4}$  mile. Straight-in Rwy 6 NA at night, Circling Rwy 6 NA at night. Rwy 6 helicopter visibility reduction below 1 SM NA.


**MISSED APPROACH:** Climb to 3000 direct HAMPP and on track 122° to HUSKY and hold.

AWOS-3  
124.825

ATLANTA APP CON  
128.575 343.675

CLNC DEL  
**128.575 343.675**

UNICOM  
122.725 (CTAF) **L**

CATEGORY	A	B	C	D
LNAV MDA	1300-1	439 (500-1)	1300-1¼	439 (500-1¼)
 CIRCLING	1380-1	498 (500-1)	1700-2½ 818 (900-2½)	1740-2¾ 858 (900-2¾)