

LOC/DME I-OPN	APP CRS	Rwy Idg	5651
109.75	301°	TDZE	796
Chan 34 (Y)		Apt Elev	798

ILS or LOC RWY 30

THOMASTON-UPSON COUNTY (OPN)

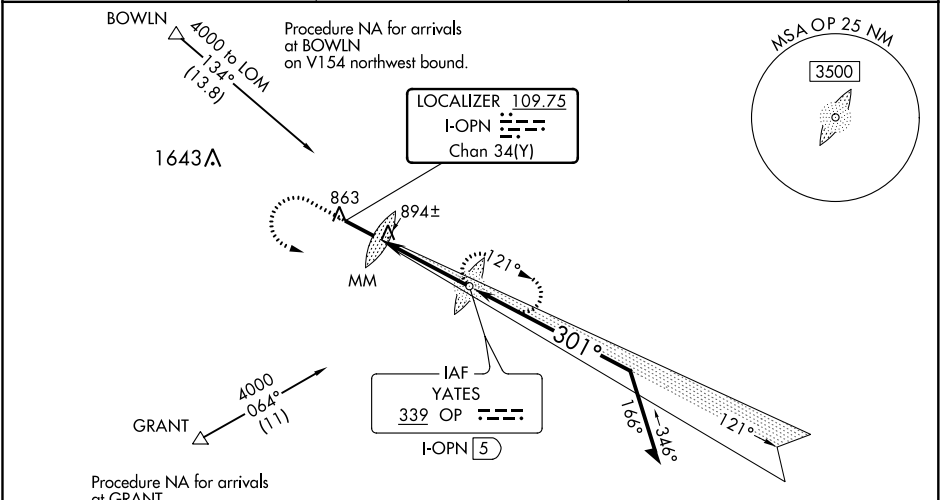
ADF required.

When local altimeter setting not received, use Atlanta Rgnl Falcon Field altimeter setting: increase DA to 1064 feet; increase all MDAs 80 feet and S-LOC 30 visibility Cats C and D ½ SM. For inop ALS, increase S-LOC 30 Cat C/D visibility to 1 SM. For inop ALS when using Atlanta Rgnl Falcon Field altimeter setting, increase S-ILS 30 all Cats visibility to ¾ SM. VDP NA when using Atlanta Rgnl Falcon Field altimeter setting.

MALSR

MISSED APPROACH: Climb to 1500 then climbing left turn to 3000 direct YATES LOM and hold, continue climb-in-hold to 3000.

AWOS-3 133.975	ATLANTA APP CON ★ 124.2 279.6	UNICOM 122.8 (CTAF) 0
-------------------	----------------------------------	--------------------------



ELEV 798 TDZE 796

MIRL Rwy 12-30 0

FAF to MAP 4 NM

Knots	60	90	120	150	180
Min:Sec	4:00	2:40	2:00	1:36	1:20

1500 3000 OP

LOM I-OPN 5

2141

121°

301°

2400

GS 3.00° TCH 51

VGSI and ILS glidepath not coincident (VGSI Angle 3.00/TCH 27).

0.4 0.7 NM 3 NM

CATEGORY	A	B	C	D
S-ILS 30	996-½ 200 (200-½)			
S-LOC 30	1160-½	364 (400-½)	1160-¾ 364 (400-¾)	1160-¾ 364 (400-¾)
CIRCLING	1300-1	502 (600-1)	1300-1½ 502 (600-1½)	1360-2 562 (600-2)