

WAAS CH <b>63115</b> <b>W12A</b>	APP CRS <b>121°</b>	Rwy ldg TDZE <b>791</b> Apt Elev <b>798</b>
--	------------------------	---

RNAV (GPS) RWY 12

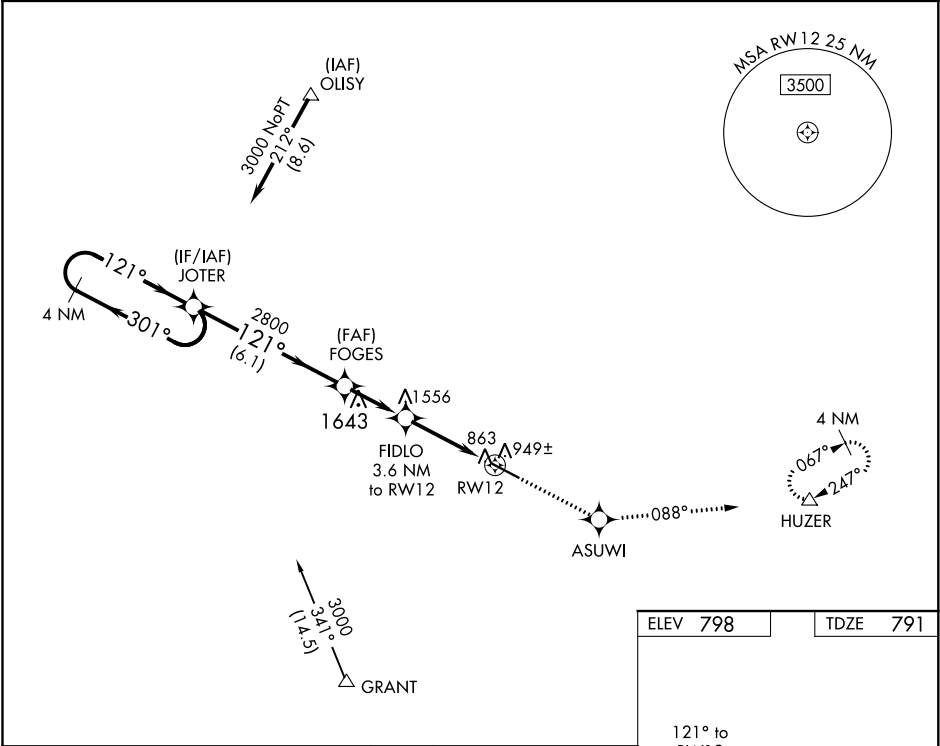
THOMASTON-UPSON COUNTY (OPN)

⚠

DME/DME RNP-0.3 NA. Visibility reduction by helicopters NA. When local altimeter setting not received, use Atlanta Rgnl Falcon Field altimeter setting and increase all DA 68 feet and all MDA 80 feet; increase LPV visibility ¼ mile all Cats, LNAV Cat D visibility ¼ mile.

MISSED APPROACH: Climb to 3000 direct ASUWI and via track 088° to HUZER and hold.

AWOS-3 <b>133.975</b>	ATLANTA APP CON ★ <b>124.2 279.6</b>	UNICOM <b>122.8 (CTAF) 0</b>
--------------------------	---	---------------------------------



VGSI and RNAV glidepath not coincident (VGSI Angle 3.50/TCH 32).

4 NM Holding Pattern JOTER

3000 301° 121°

GP 3.00° TCH 50

FOGES

FIDLO 3.6 NM to RW12

RW12

6.1 NM 2.5 NM 3.6 NM

3000 ASUWI tr 088° HUZER

\* LNAV only

121° to RW12

6.350 X 100

CATEGORY	A	B	C	D
LPV DA	1063-1 272 (300-1)			
LNAV MDA	1200-1 409 (500-1)		1200-1¼ 409 (500-1¼)	
CIRCLING	1300-1 502 (600-1)		1300-1½ 502 (600-1½)	1360-2 562 (600-2)

MIRL Rwy 12-30 0

SE-4, 03 DEC 2020 to 31 DEC 2020

SE-4, 03 DEC 2020 to 31 DEC 2020