

WAAS CH 58215 W30A	APP CRS 301°	Rwy Idg TDZE 796 Apt Elev 798	5651 796 798
--	------------------------	---	---

RNAV (GPS) RWY 30

THOMASTON-UPSON COUNTY (OPN)

T

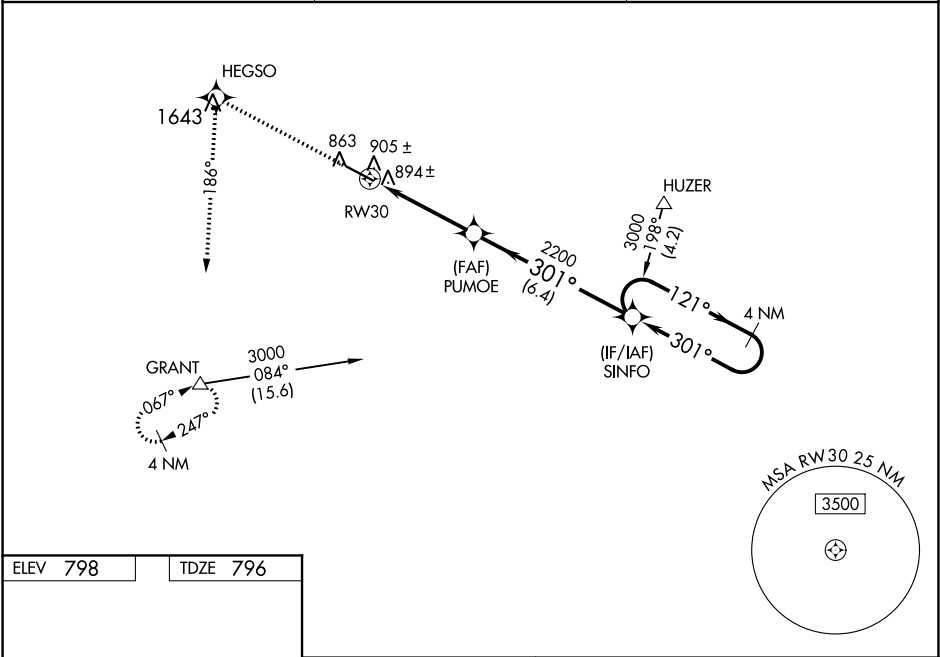
A

For uncompensated Baro-VNAV systems, LNAV/VNAV NA below -16°C (4°F) or above 47°C (116°F). DME/DME RNP- 0.3 NA. VDP and Baro-VNAV NA when using Atlanta Rgnl Falcon Field altimeter setting. When local altimeter setting not received, use Atlanta Rgnl Falcon Field altimeter setting and increase all DA 68 feet and all MDA 80 feet; increase LNAV/VNAV visibility ¼ mile all Cats, LNAV Cat C visibility ¼ mile. For inoperative MALS, increase LNAV Cat D visibility ¼ mile. For inoperative MALS, when using Atlanta Rgnl Falcon Field altimeter setting; increase LPV visibility ½ mile all Cats.

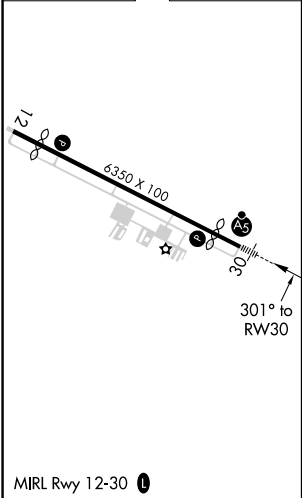
MALS

MISSED APPROACH: Climb to 3000 direct HEGSO and climbing left turn via track 186° to GRANT and hold.

AWOS-3 133.975	ATLANTA APP CON ★ 124.2 279.6	UNICOM 122.8 (CTAF) 0
--------------------------	---	---------------------------------



ELEV 798	TDZE 796
-----------------	-----------------



3000 HEGSO

GRANT

VGSI and RNAV glidepath not coincident (VGSI Angle 3.00/TCH 27).

4 NM Holding Pattern

*LNAV only

*1.3 NM to RW30

PUMOE

SINFO

121°

301°

3000

GP 3.00° TCH 51

CATEGORY	A	B	C	D
LPV DA		996-½	200 (200-½)	
LNAV/VNAV DA		1191-¾	395 (400-¾)	
LNAV MDA	1240-½	444 (500-½)	1240-¾ 444 (500-¾)	1240-1 444 (500-1)
CIRCLING	1300-1	502 (600-1)	1300-1½ 502 (600-1½)	1360-2 562 (600-2)