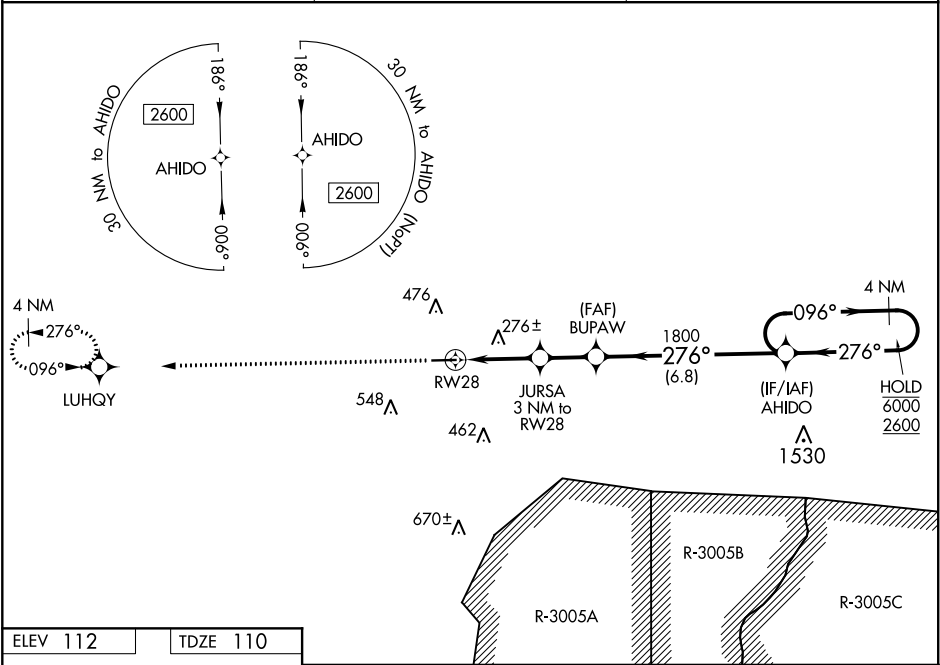


RNP APCH.

Rwy 28 helicopter visibility reduction below $\frac{3}{4}$ SM NA.
For uncompensated Baro-VNAV systems, LNAV/VNAV NA below -15°C or above 54°C.

MISSED APPROACH: Climb to 2600 direct LUHQY and hold.

AWOS-3 120.075	JACKSONVILLE CENTER 132.925 363.2	UNICOM 122.8 (CTAF) 0
--------------------------	---	---------------------------------



ELEV 112	TDZE 110
-----------------	-----------------

2600 LUHQY

↑

✦

*LNAV only.

276° to RW28

0.3° UP

5251 X 75

10

2600

LUHQY

BUPAW

JURSA 3 NM to RW28

RW28

AHIDO

1800

1140*

1800

6000

2600

4 NM Holding Pattern

096° →

← 276°

GP 3.10°

TCH 55

1.3

1.7 NM

2 NM

6.8 NM

CATEGORY	A	B	C	D
LPV DA		386-1	276 (300-1)	
LNAV/VNAV DA		403-1	293 (300-1)	
LNAV MDA	540-1	430 (500-1)	540-1¼	430 (500-1¼)
<div><div></div><div>CIRCLING</div></div>	580-1 468 (500-1)	780-1 668 (700-1)	860-2¼ 748 (800-1¼)	860-2½ 748 (800-2½)