

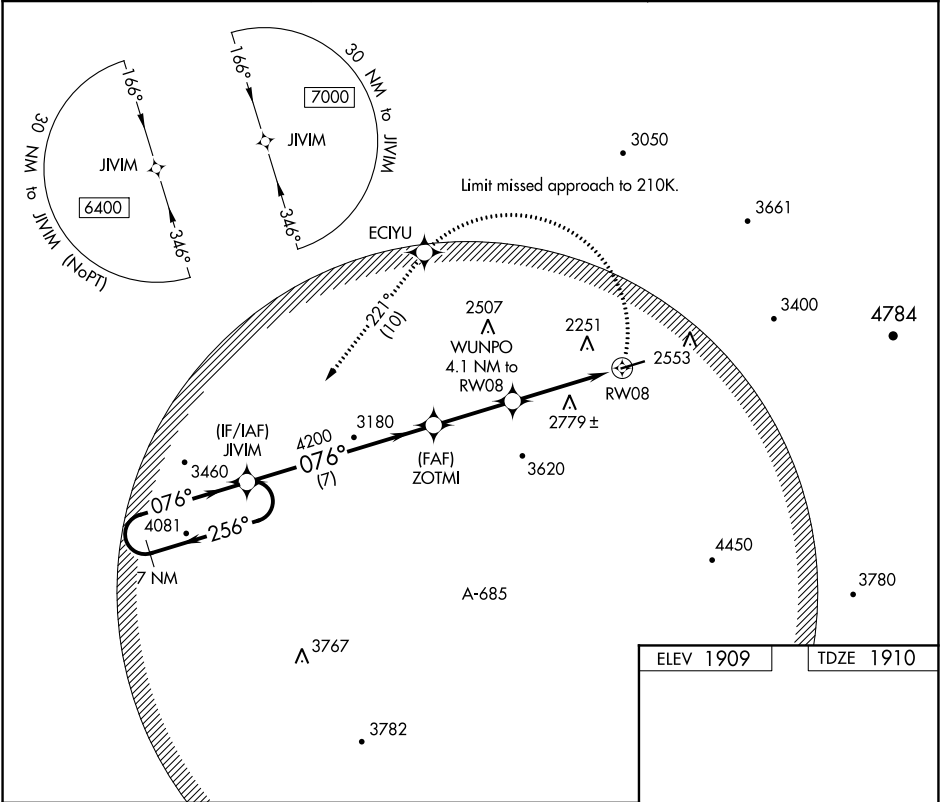
APP CRS	Rwy Idg	4894
076°	TDZE	1910
	Apt Elev	1909

RNAV (GPS) RWY 8

BLAIRSVILLE (DZJ)

When local altimeter setting not received, Procedure NA.	MISSED APPROACH: Climbing left turn to 6400 direct ECIYU and on track 221° to JIVIM and hold, continue climb-in-hold to 6400.
NA DME/DME RNP-0.3 NA. Procedure NA at night. Circling NA for Cat D.	

AWOS-3 119.325	ATLANTA CENTER 134.8 379.95	UNICOM 122.8 (CTAF) 0
-------------------	--------------------------------	--------------------------



7 NM Holding Pattern		JIVIM	6400	ECIYU	tr 221°	JIVIM
6400		256°	076°	076°		
		4200	3.00°	TCH 45	3240	
		7 NM	2.9 NM	4.1 NM		
CATEGORY	A	B	C	D		
LNVA MDA	2940-1¼ 1030 (1100-1¼)	2940-1½ 1030 (1100-1½)	2940-3 1030 (1100-3)			
CIRCLING	2940-1¼ 1031 (1100-1¼)	3000-1½ 1091 (1100-1½)	3160-3 1251 (1300-3)	NA		

