

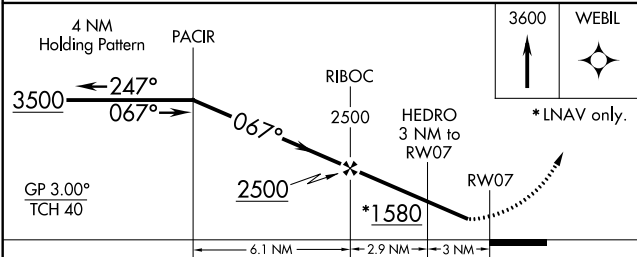
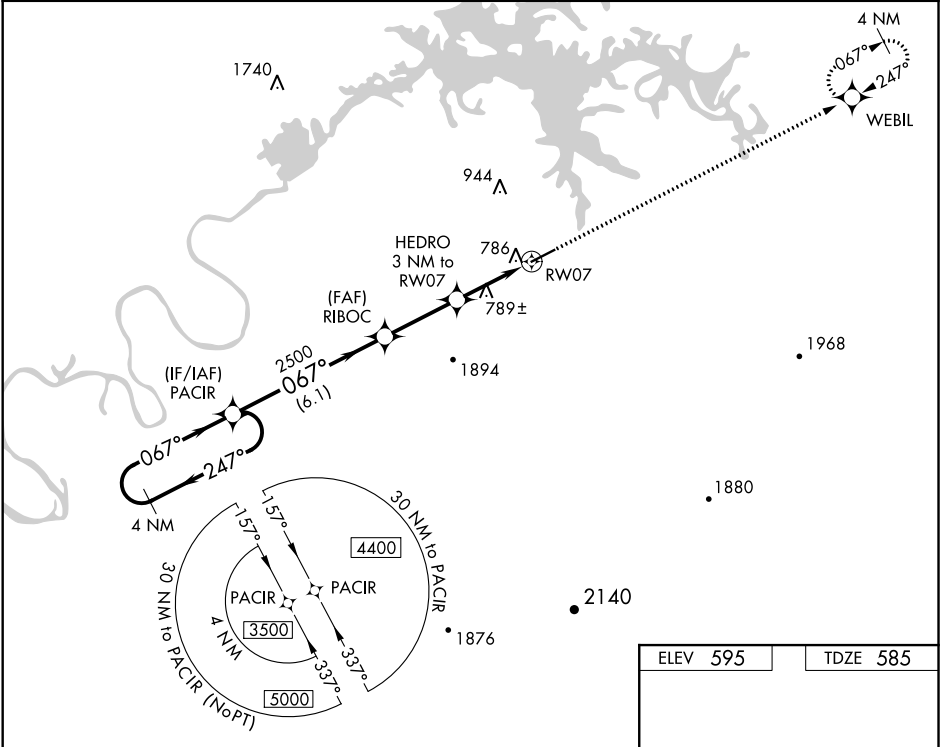
WAAS CH <b>48927</b> <b>W07A</b>	APP CRS <b>067°</b>	Rwy Idg <b>5500</b> TDZE <b>585</b> Apt Elev <b>595</b>
--	------------------------	---

RNAV (GPS) RWY 7

CENTRE-PIEDMONT CHEROKEE COUNTY RGNL (PYP)

<div><div>▼</div><div>▲ NA</div></div> <div>Baro-VNAV NA. DME/DME RNP-0.3 NA. Helicopter visibility reduction below ¾ SM NA. Use Gadsden altimeter setting; when not received use Anniston altimeter setting and increase all DA/MDA 20 feet; increase LPV all Cats and LNAV Cats C/D visibility ½ mile.</div>	MISSED APPROACH: Climb to 3600 direct WEBIL and hold.
--	--

GAD AWOS-3PT <b>127.825</b>	ATLANTA CENTER <b>124.5 270.325</b>	CTAF <b>122.90</b>
--------------------------------	--	-----------------------



ELEV 595	TDZE 585
MIRL Rwy 7-25	

CATEGORY	A	B	C	D
LPV DA	896-1 311 (400-1)			
LNAV/VNAV DA	1009-1½ 424 (500-1½)			
LNAV MDA	1100-1 515 (600-1)		1100-1⅜ 515 (600-1⅜)	
CIRCLING	1160-1 565 (600-1)		1160-2 565 (600-2)	