

CLOUD-FOUR ALPHA DEPARTURE (CLOUA4•CLOUD)

HOLLOMAN AFB (KHMN)
ALAMOGORDO, NEW MEXICO

ATIS ★ 273.5
CLNC DEL
126.7 289.4
GND CON
127.05 275.8
HOLLOMAN TOWER ★
119.3 255.9
HOLLOMAN DEP CON
128.1 284.0
ALBUQUERQUE CENTER
132.65 257.6

SHL-7 [USAF]

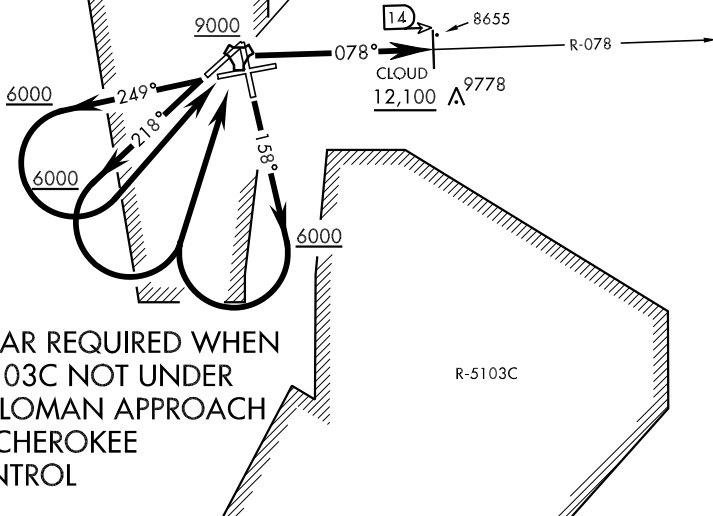
Rwy	Knots	60	120	180	240	300	360
16/25	V/V(fpm)	450	900	1350	1800	2250	2270
22	V/V(fpm)	440	880	1320	1760	2200	2640

Minimum climb to 12,100

BEAK B MOA

BEAK C MOA

HOLLOMAN
Chan 92 HMN



RADAR REQUIRED WHEN
R-5103C NOT UNDER
HOLLOMAN APPROACH
OR CHEROKEE
CONTROL

DEPARTURE ROUTE DESCRIPTION

TAKE-OFF RWY 16: Climb on track 158°. When leaving 6000 turn right direct HMN TACAN, then proceed via HMN R-078 to CLOUD (HMN R-078/14), then via assigned routing. Cross HMN at or above 9000. Cross CLOUD at or above 12,100.

TAKE-OFF RWY 22: Climb on track 218°. When leaving 6000 turn left direct HMN TACAN, then proceed via HMN R-078 to CLOUD (HMN R-078/14), then via assigned routing. Cross HMN at or above 9000. Cross CLOUD at or above 12,100.

TAKE-OFF RWY 25: Climb on track 249°. When leaving 6000 turn left direct HMN TACAN, then proceed via HMN R-078 to CLOUD (HMN R-078/14), then via assigned routing. Cross HMN at or above 9000. Cross CLOUD at or above 12,100.

CLOUD-FOUR ALPHA DEPARTURE (CLOUA4•CLOUD)

ALAMOGORDO, NEW MEXICO
HOLLOMAN AFB (KHMN)