

## RNAV (GPS) RWY 16

APCH CRS 158°	Rwy Idg	12,134
	TDZE	4083
	Arpt Elev	4093

AL-7 (USAF)

HOLLOMAN AFB (KHMN)

**T** \* When ALS inop, increase CAT ABCDE vis to 1 7/8 miles.  
 \*\* When ALS inop, increase CAT CDE vis to 1 3/8 miles.

ALSF-1

**MISSED APPROACH:** Climb straight ahead to 7000, passing 500 turn direct JOBAM, do not exceed 265 KIAS until turn completion and hold.

ATIS★ 273.5	ALBUQUERQUE CENTER 132.65 257.6	APP CON 120.6 269.225	TOWER★ 119.3 255.9	GND CON 127.05 275.8	CLNC DEL 126.7 289.4
----------------	------------------------------------	--------------------------	-----------------------	-------------------------	-------------------------

RNP APCH

DME/DME RNP-0.3 NA  
GPS REQUIRED

For uncompensated Baro-VNAV systems, procedure NA below -20°C (-4°F) or above 54°C (130°F).

## Visibility Reduction by Helicopters NAs

When VGSI inop,  
procedure NA at night.

USAF Only: When VGS inop, straight-in RWY 16 authorized at night with MAJCOM A3 approval.

Unlit terrain 0 ft AGL/4082  
ft MSL, 200 ft from threshold,  
137 ft right of course.

Cold temperature based  
on standard -30.00° C  
ISA deviation.

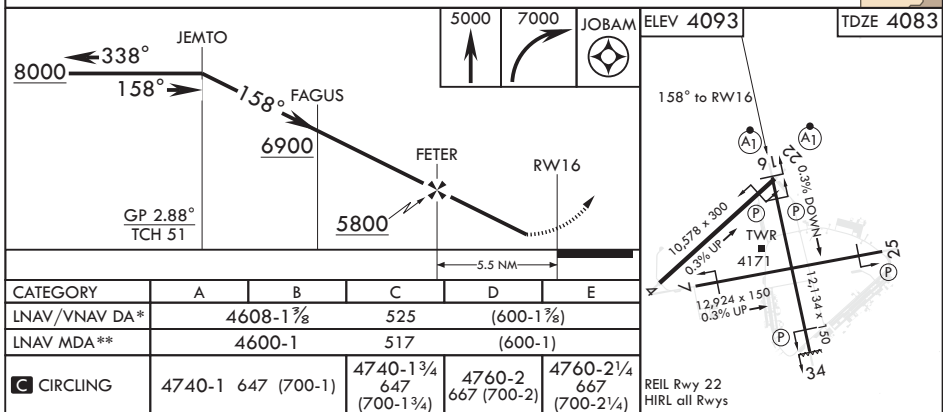
CAUTION: Circling to Rwy 4 NA at night.

**CAUTION: CAT E and portions of CAT D circling not fully contained in controlled airspace.**

**CAUTION:** When Rwy 22 VGSi inop, circling to Rwy 22 NA at night.

**CAUTION:** High terrain to East within 15 NM.

EMERG SAFE ALT 100 NM 14,200



ALAMOGORDO, NEW MEXICO

32°51'N - 106°07'W

HOLLOMAN AFB (KHMN)

Orig 08NOV18

## RNAV (GPS) RWY 16

SW-1, 03 DEC 2020 to 31 DEC 2020

SW-1, 03 DEC 2020 to 31 DEC 2020