

APP CRS	Rwy Idg	13793
259°	TDZE	5355
	Apt Elev	5355

RNAV (RNP) Z RWY 26
ALBUQUERQUE INTL SUNPORT (ABQ)

RNP AR APCH, RF required.

T For uncompensated Baro-VNAV systems, procedure NA
ASR below -13°C or above 48°C.

MISSED APPROACH: Climb to 8000 on track 259° to YANNU and on track 258° to ABQ VORTAC and hold.

D-ATIS
118.0 257.7

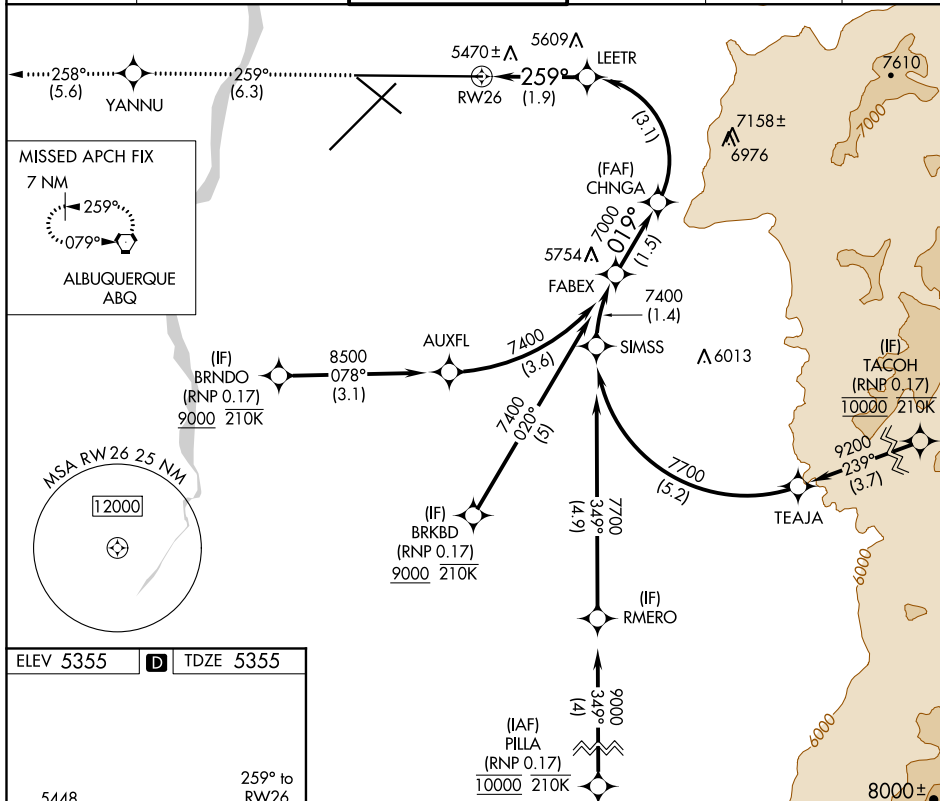
ALBUQUERQUE APP CON
123.9 354.1

ALBUQUERQUE TOW
120.3 351.9

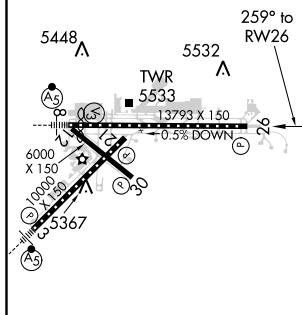
GND CON
121.9 348.6

CLNC DEL
119.2 259.3

CPDLC



ELEV 5355	D	TDZE 5355
-----------	----------	-----------



MIRL Rwy 12-30
TDZ/CL Rwy 3 and 8
HIRL Rwy 3-21 and 8-26
REIL Rwy 21, 26, and 30

8000 ↑ tr 259°	YANNU ✦	tr 258°	ABQ ⬡	VGS1 and RNAV glidepath not coincident (VGS1 Angle 3.00/TCH 83).		
See planview for multiple IF locations.				LEETR 6007	CHNGA 7000	FABEX 7400
RW26 259°				1.9 NM	3.1 NM	1.5 NM
CATEGORY	A		B		C	D
RNP 0.17 DA	5745-1¼		390 (400-1¼)			
AUTHORIZATION REQUIRED						

ALBUQUERQUE, NEW MEXICO
Amdt 2A 16AUG18

35°02'N-106°36'W

ALBUQUERQUE INTL SUNPORT (ABQ)
RNAV (RNP) Z RWY 26