

WAAS CH <b>78137</b> <b>W03A</b>	APP CRS <b>034°</b>	Rwy Idg TDZE Apt Elev	<b>10000</b> <b>5312</b> <b>5355</b>
--	------------------------	-----------------------------	--

RNAV (GPS) Y RWY 3

ALBUQUERQUE INTL SUNPORT (ABQ)

✚

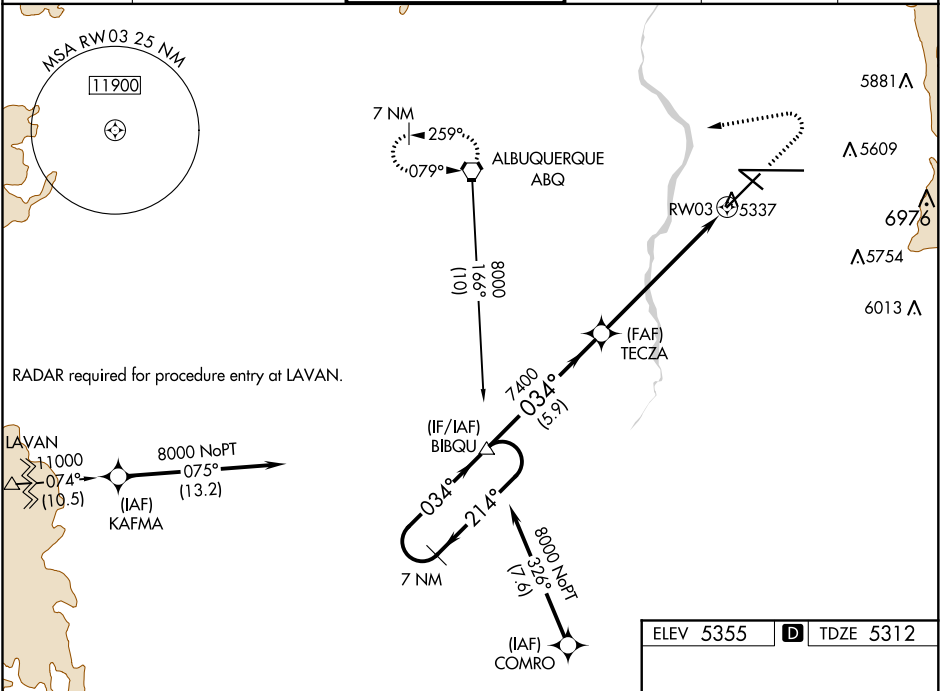
ASR

DME/DME RNP-0.3 NA.  
For uncompensated Baro-VNAV systems,  
LNAV/VNAV NA below -13°C (9°F) or above 45°C (114°F).

MALSR

MISSED APPROACH: Climb to 5900  
then climbing left turn to 8000 direct  
ABQ VORTAC and hold, continue  
climb-in-hold to 8000.

D-ATIS <b>118.0 257.7</b>	ALBUQUERQUE APP CON <b>123.9 354.1</b>	ALBUQUERQUE TOWER <b>120.3 351.9</b>	GND CON <b>121.9 348.6</b>	CLNC DEL <b>119.2 259.3</b>	CPDLC
------------------------------	---	---	-------------------------------	--------------------------------	-------



7 NM Holding Pattern		BIBQU	TECZA	5900	8000	ABQ
8000		214°	034°	034°	7400	* 0.8 NM to RW03
GP 3.00°		* LNAV only				
TCH 60		RW03				
		5.9 NM	5.6 NM	0.8		
CATEGORY	A	B	C	D		
LPV DA	5512/24		200 (200-½)			
LNAV/VNAV DA	5562/24		250 (300-½)			
LNAV MDA	5620/24		308 (300-½)			
CIRCLING	5840-1 485 (500-1)	5920-1 565 (600-1)	5940-1½ 585 (600-½)	6460-3 1105 (1200-3)		

