

VORTAC ABQ	APP CRS	Rwy Idg
<b>113.2</b>	<b>077°</b>	<b>12793</b>
Chan 79		TDZE <b>5320</b>
		Apt Elev <b>5355</b>

VOR RWY 8

ALBUQUERQUE INTL SUNPORT (ABQ)

⚠

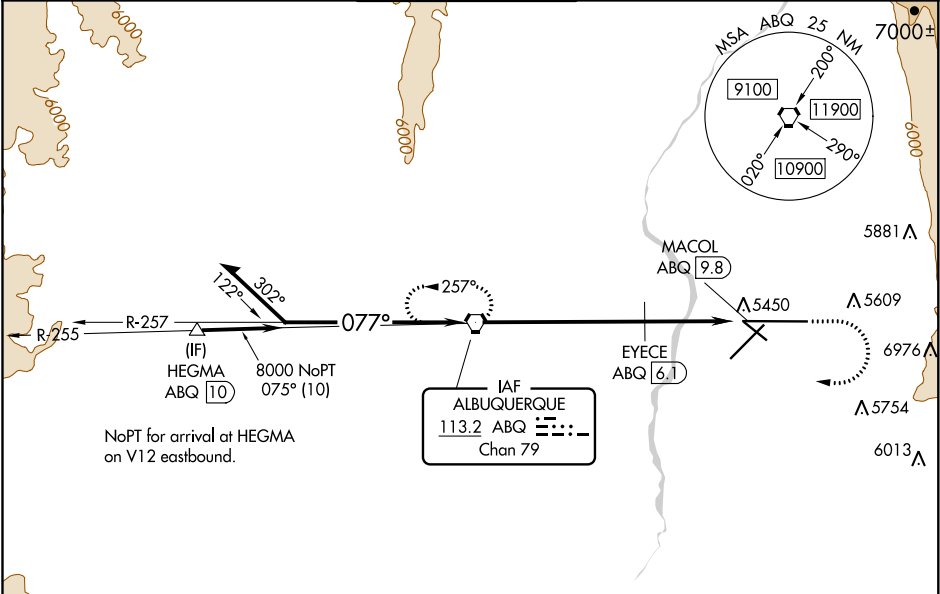
ASR

EYECE FIX MINIMUMS: For inop ALS, increase S-8 Cat C/D/E visibility to RVR 5500.  
For inop ALS, increase S-8 Cat E visibility to 3 SM.  
Circling Cat E NA southeast of Rwy 3-21 and northeast of Rwy 12-30.

MALSR

MISSED APPROACH: Climb to 5800 then climbing right turn to 8000 direct ABQ VORTAC and hold.

D-ATIS	ALBUQUERQUE APP CON	ALBUQUERQUE TOWER	GND CON	CLNC DEL	CPDLC
<b>118.0 257.7</b>	<b>123.9 354.1</b>	<b>120.3 351.9</b>	<b>121.9 348.6</b>	<b>119.2 259.3</b>	



ELEV 5355

TDZE 5320

Remain within 15 NM

ABQ VORTAC

8200

257°

077°

8000

6380

6.1 NM

2.6 NM

1.1 NM

5800

8000

ABQ

EYECE ABQ [6.1]

ABQ [8.7]

MACOL ABQ [9.8]

077° 9.8 NM from FAF

5448

5532

TWR 5533

13793 X 150

0.5% DOWN

26

6000 X 150

10000 X 150

5367

MIRL Rwy 12-30

TDZ/CL Rwy 3 and 8

HIRL Rwy 3-21 and 8-26

REIL Rwy 21, 26, and 30

FAF to MAP 9.8 NM

Knots	60	90	120	150	180
Min:Sec	9:48	6:32	4:54	3:55	3:16

CATEGORY	A	B	C	D	E
S-8	6380/40 1060 (1100-¾)	6380/55 1060 (1100-1)	6380-2½	1060 (1100-2½)	
CIRCLING	6380-1¼ 1025 (1100-1¼)	6380-1½ 1025 (1100-1½)	6380-3 1025 (1100-3)	6460-3 1105 (1200-3)	7460-3 2105 (2200-3)
EYECE FIX MINIMUMS					
S-8	5700/24	380 (400-½)	5700/40	380 (400-¾)	
CIRCLING	5840-1 485 (500-1)	5920-1 565 (600-1)	5940-1½ 585 (600-1½)	6460-3 1105 (1200-3)	7460-3 2105 (2200-3)