

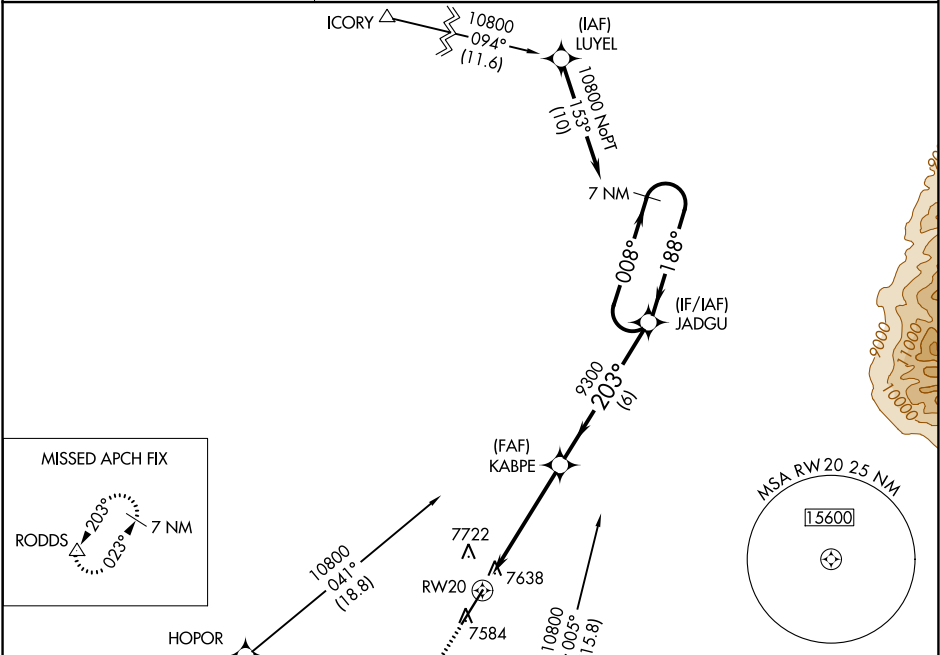
WAAS CH 93500 W20A	APP CRS 203°	Rwy Idg 8519 TDZE 7539 Apt Elev 7539
--	------------------------	---

RNAV (GPS) RWY 20

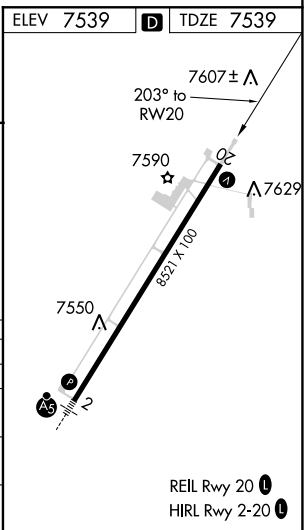
SAN LUIS VALLEY RGNL/BERGMAN FIELD (ALS)

<div><div></div><div>When local altimeter setting not received, procedure NA. For uncompensated Baro-VNAV systems, LNAV/VNAV NA below -30°C (-22°F) or above 34°C (93°F). DME/DME RNP- 0.3 NA. Visibility reduction by helicopters NA.</div></div>	MISSED APPROACH: Climb to 11500 direct RODDS and hold, continue climb-in-hold to 11500.
--	---

ASOS 135.175	DENVER CENTER 128.375 379.95	UNICOM 122.8 (CTAF) 1
------------------------	--	---------------------------------



ELEV 7539	TDZE 7539
11500	RODDS
8138	12400
GEMKY	HOPOR
KABPE	JADGU
9300	10800
1.3 NM	4 NM
6 NM	7 NM
CATEGORY	A B C D
LPV DA	7867-1 328 (400-1)
LNAV/VNAV DA	8002-1½ 463 (500-1½)
LNAV MDA	8000-1 461 (500-1)
CIRCLING	8040-1 501 (600-1)



SW-1, 03 DEC 2020 to 31 DEC 2020

SW-1, 03 DEC 2020 to 31 DEC 2020