

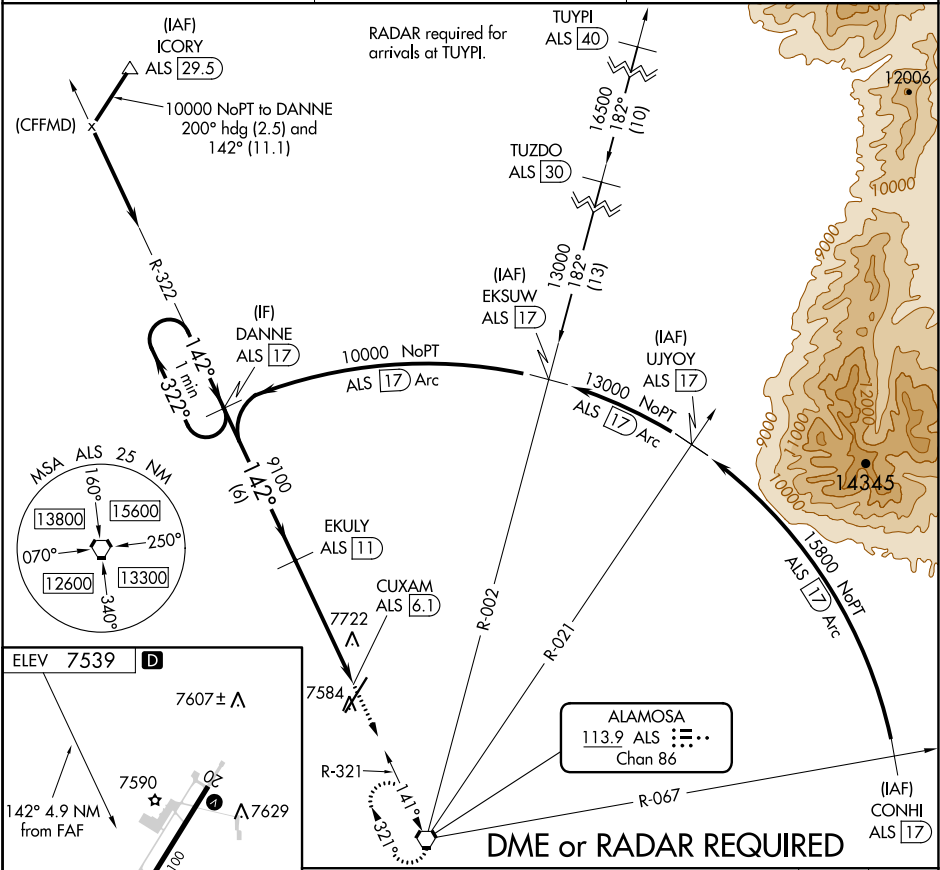
VORTAC ALS <b>113.9</b> Chan <b>86</b>	APP CRS <b>142°</b>	Rwy Idg TDZE Apt Elev <b>7539</b>	<b>N/A</b> <b>N/A</b> <b>7539</b>
--	------------------------	--	---

VOR/DME-B

SAN LUIS VALLEY RGNL/BERGMAN FIELD (ALS)

<b>NA</b> When local altimeter setting not received, procedure NA.	MISSED APPROACH: Climb to 10700 direct ALS VORTAC and hold, continue climb-in-hold to 10700.
--	--

ASOS <b>135.175</b>	DENVER CENTER <b>128.375 379.95</b>	UNICOM <b>122.8 (CTAF) 0</b>
------------------------	--	---------------------------------



DME or RADAR REQUIRED			
One Minute Holding Pattern			
10000 ← 322° → 142° → 142° → 9100 → 6 NM → 4.9 NM →			
DANNE ALS 17, EKULY ALS 11, CUXAM ALS 6.1			
CATEGORY	A	B	C
<b>C</b> CIRCLING	8040-1	501 (600-1)	8080-1½ 541 (600-1½)
			8100-2 561 (600-2)

SW-1, 03 DEC 2020 to 31 DEC 2020

SW-1, 03 DEC 2020 to 31 DEC 2020