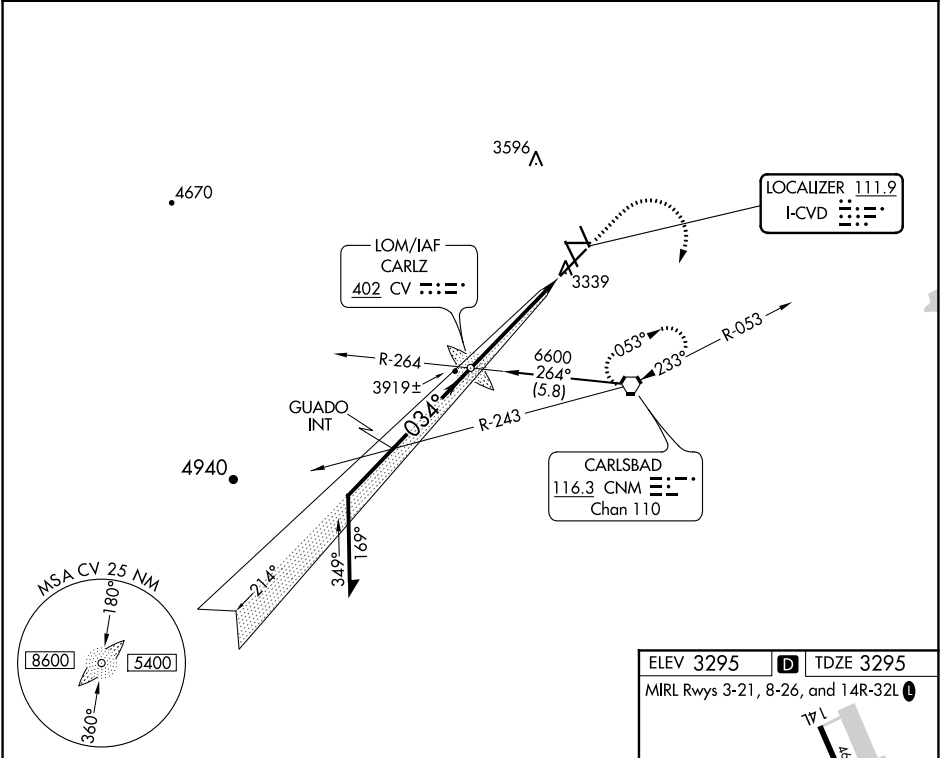


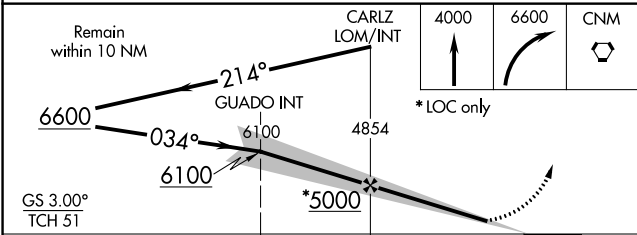
LOC I-CVD 111.9	APP CRS 034°	Rwy Idg TDZE Apt Elev	7854 3295 3295
---------------------------	------------------------	-----------------------------	---

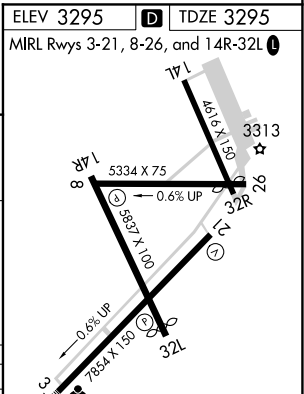
ILS RWY 3
CAVERN CITY AIR TERMINAL (CNM)

		MISSED APPROACH: Climb to 4000 then climbing right turn to 6600 direct CNM VORTAC and hold.
---	---	---

ASOS 118.375	ALBUQUERQUE CENTER 135.875 292.15	UNICOM 123.0 (CTAF) 0
------------------------	---	---------------------------------



Remain within 10 NM				
				
* LOC only				
GS 3.00° TCH 51				
CATEGORY	A	B	C	D
S-ILS 3	3495-½ 200 (200-½)			
S-LOC 3	3940-½	645 (700-½)	3940-1¼ 645 (700-1¼)	3940-1½ 645 (700-1½)
CIRCLING	3940-1	645 (700-1)	3960-1⅜ 665 (700-1⅜)	4260-3 965 (1000-3)

ELEV 3295	TDZE 3295
MIRL Rwys 3-21, 8-26, and 14R-32L	
	
034° 4.7 NM from FAF	
FAF to MAP 4.7 NM	
Knots	60 90 120 150 180
Min:Sec	4:42 3:08 2:21 1:53 1:34

SW-1, 03 DEC 2020 to 31 DEC 2020

SW-1, 03 DEC 2020 to 31 DEC 2020