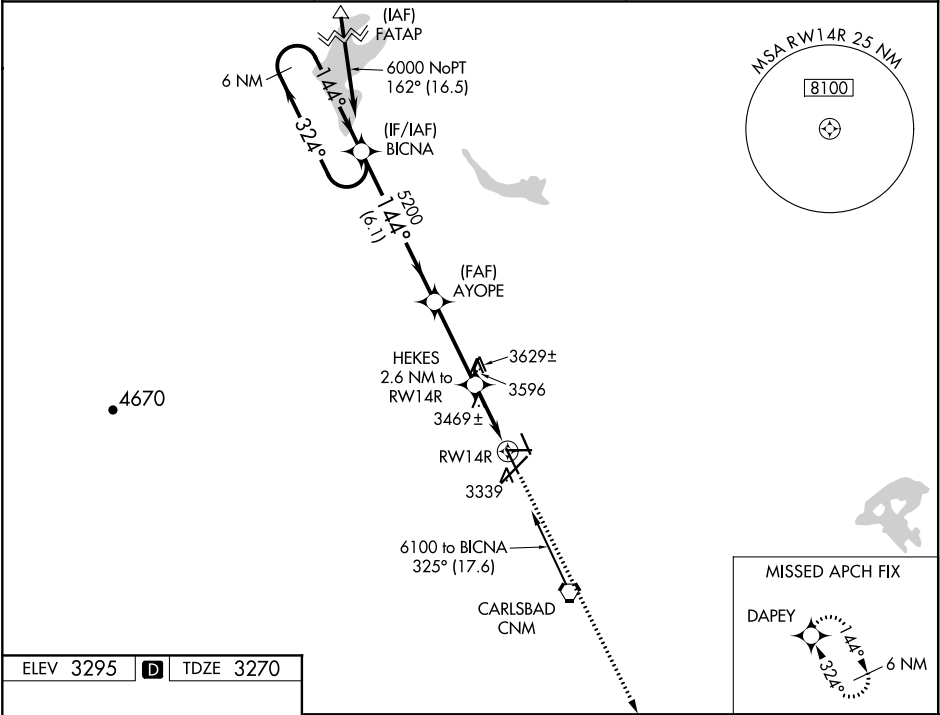


WAAS CH 61034 W14A	APP CRS 144°	Rwy Idg TDZE Apt Elev	5837 3270 3295
--	------------------------	-----------------------------	---

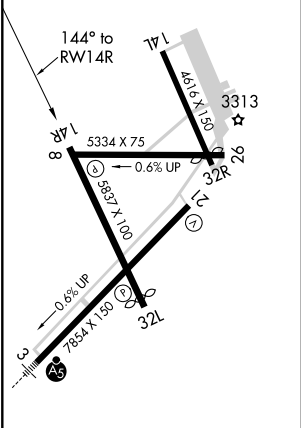
RNAV (GPS) RWY 14R
CAVERN CITY AIR TERMINAL (CNM)

 For uncompensated Baro-VNAV systems, LNAV/VNAV NA below -10°C (14°F) or above 54°C (130°F). DME/DME RNP-0.3 NA. Helicopter visibility reduction below 1 SM NA.	MISSED APPROACH: Climb to 6000 direct DAPEY and hold.
--	---

ASOS 118.375	ALBUQUERQUE CENTER 135.875 292.15	UNICOM 123.0 (CTAF) 0
------------------------	---	---------------------------------



ELEV 3295	D	TDZE 3270
-----------	----------	-----------



VGSI and RNAV glidepath not coincident (VGSI Angle 3.00/TCH 56).				
6 NM Holding Pattern				
GP 3.00° TCH 40				
6000 ← 324° → 144° → 5200 → 144° → 5200 → *4120 → RW14R				
6.1 NM 3.3 NM 2.6 NM				
CATEGORY	A	B	C	D
LPV DA	3520-1 250 (300-1)			
LNAV/VNAV DA	3520-1 250 (300-1)			
LNAV MDA	3720-1 450 (500-1)		3720-1⅜ 450 (500-1⅜)	
CIRCLING	3720-1 425 (500-1)	3780-1 485 (500-1)	3960-1¾ 665 (700-1¾)	4260-3 965 (1000-3)

SW-1, 03 DEC 2020 to 31 DEC 2020

SW-1, 03 DEC 2020 to 31 DEC 2020