

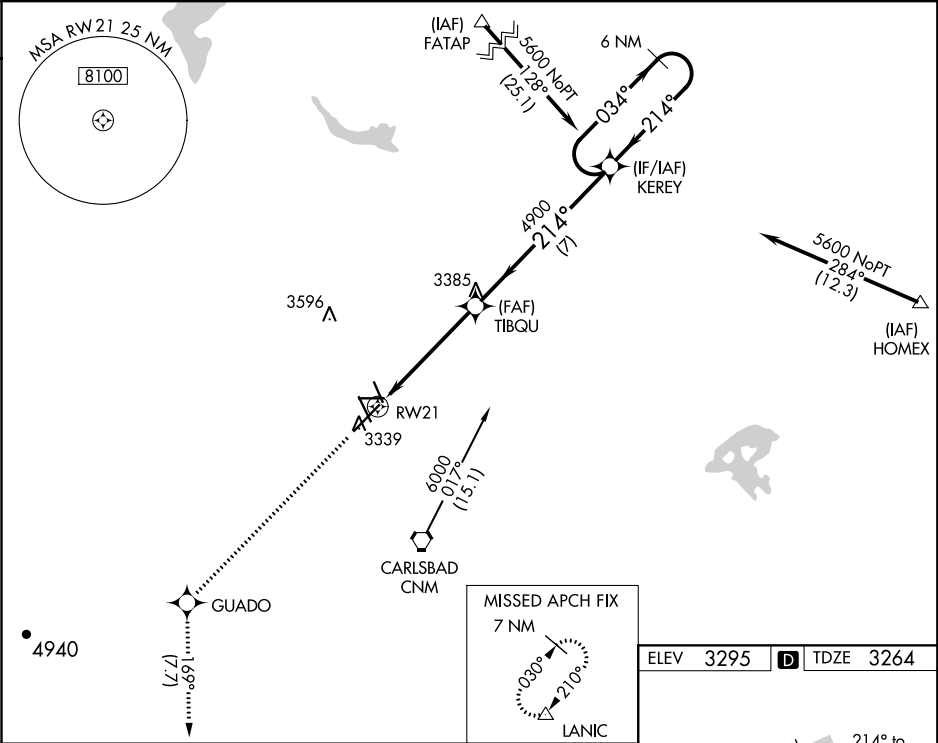
WAAS CH 90234 W21A	APP CRS 214°	Rwy Idg TDZE 3264 Apt Elev 3295
--	------------------------	---

RNAV (GPS) RWY 21

CAVERN CITY AIR TERMINAL (CNM)

<div><div></div><div></div></div> <div>For uncompensated Baro-VNAV systems, LNAV/VNAV NA below -10°C (14° F) or above 50°C (123°F). DME/DME RNP-0.3 NA. Helicopter visibility reduction below ¾ SM NA.</div>	MISSED APPROACH: Climb to 8000 direct GUADO and on track 169° to LANIC, continue climb-in-hold to 8000.
--	---

ASOS 118.375	ALBUQUERQUE CENTER 135.875 292.15	UNICOM 123.0 (CTAF)
------------------------	---	-------------------------------



8000	GUADO	LANIC	TIBQU	KEREY	6 NM Holding Pattern
		tr 169°			
* LNAV only. * 0.9 NM to RWY 21					
GP 3.00° TCH 58					
CATEGORY	A	B	C	D	
LPV DA	3514-¾ 250 (300-¾)				
LNAV/VNAV DA	3514-¾ 250 (300-¾)				
LNAV MDA	3580-1 316 (300-1)				
CIRCLING	3700-1 405 (500-1)	3780-1 485 (500-1)	3960-1¾ 665 (700-1¾)	4260-3 965 (1000-3)	

