

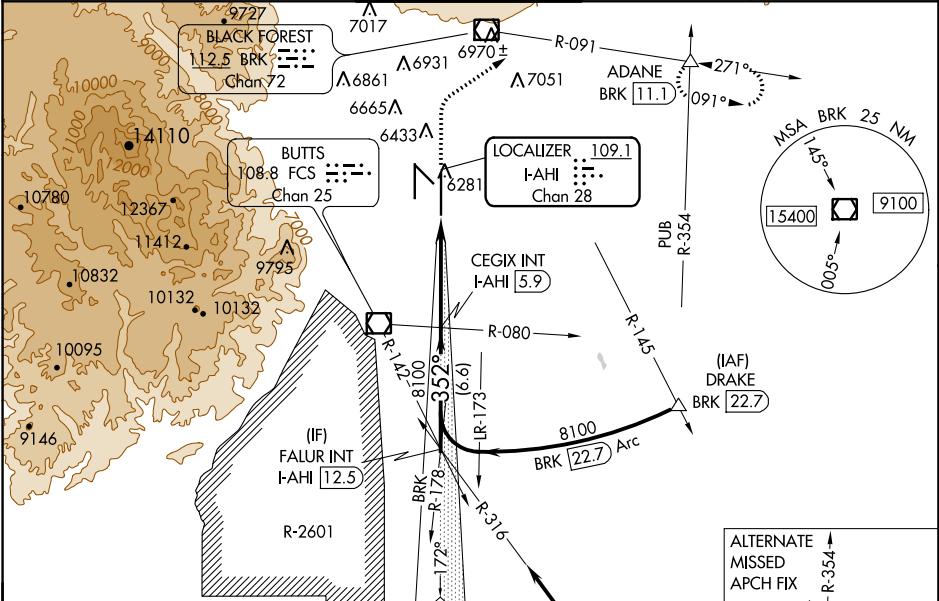
LOC/DME I-AHI	APP CRS	Rwy Idg	13501
109.1	352°	TDZE	6118
Chan 28		Apt Elev	6187

ILS or LOC RWY 35R
CITY OF COLORADO SPRINGS MUNI (COS)

⚠ **⚠** RADAR required when R-2601 in use.

MISSED APPROACH: Climb to 6700 then climbing right turn to 9000 on heading 047° and on BRK VOR/DME R-091 to ADANE INT/BRK 11.1 DME and hold.

ATIS 125.0 254.3	SPRINGS APP CON 124.0 257.875	SPRINGS TOWER 119.9 360.6	GND CON 121.7 348.6	CLNC DEL 134.45 363.125
---------------------	----------------------------------	------------------------------	------------------------	----------------------------



ELEV 6187 **D** TDZE 6118

MIRL Rwy 13-31
HIRL Rws 17R-35L and 17L-35R
6207A REIL Rws 13, 17R, 31 and 35R
TDZ/CL Rws 17L and 35R

Knots	60	90	120	150	180
Min:Sec	6:06	4:04	3:03	2:26	2:02

Procedure NA for arrival on PUB VORTAC airway radials 267 CW 354.

IAF PUEBLO 116.7 PUB Chan 114

VGSI and ILS glidepath not coincident (VGSI Angle 3.00/TCH 72).

FALUR INT I-AHI 12.5

CEGIX INT I-AHI 5.9

8100 352° 8100

GS 3.00° TCH 55

Use I-AHI DME when on the localizer course.

6.6 NM 5.3 NM 0.8 NM

CATEGORY	A	B	C	D
S-ILS 35R	6318/40 200 (200-¾)			
S-LOC 35R	6420/55 302 (300-1)	6420/45 302 (300-¾)		
C CIRCLING	6740-1 553 (600-1)	6800-1 613 (700-1)	7040-2½ 853 (900-2½)	7260-3 1073 (1100-3)

SW-1, 03 DEC 2020 to 31 DEC 2020

SW-1, 03 DEC 2020 to 31 DEC 2020