

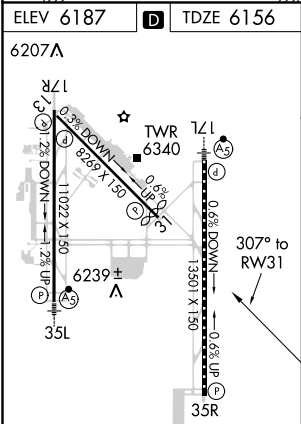
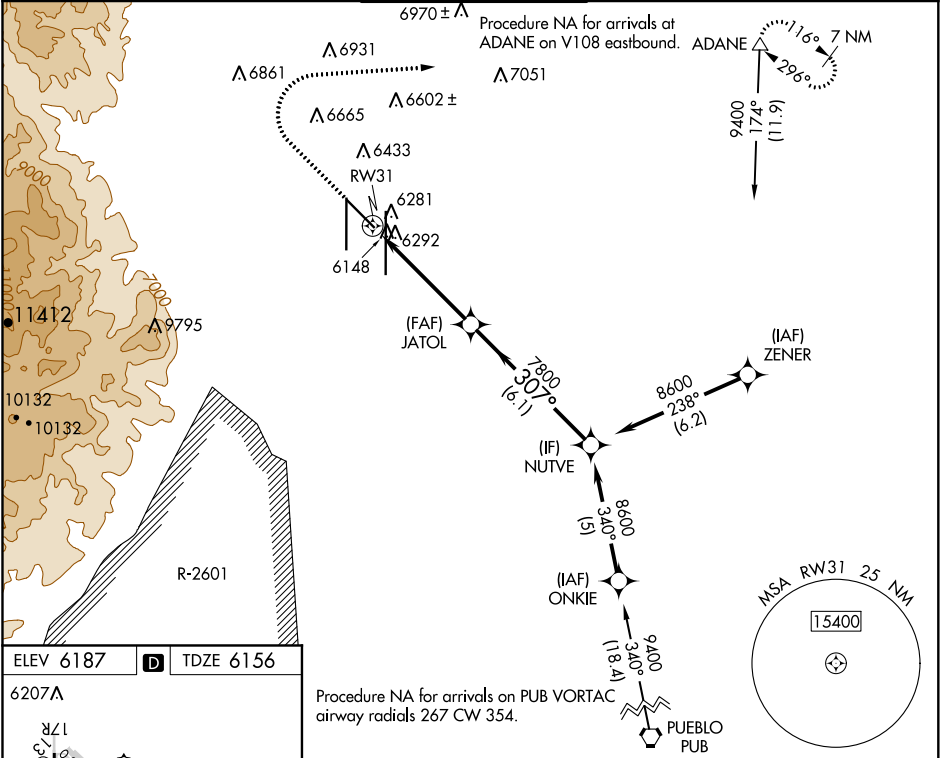
WAAS CH 40040 W31A	APP CRS 307°	Rwy Idg TDZE 6156 Apt Elev 6187
--	------------------------	---

RNAV (GPS) RWY 31

CITY OF COLORADO SPRINGS MUNI (COS)

<div><div></div><div>DME/DME RNP-0.3 NA.</div></div>	<div>MISSED APPROACH: Climb to 6700 then climbing right turn to 9000 direct ADANE and hold.</div>
--	---

ATIS 125.0 254.3	SPRINGS APP CON 124.0 257.875	SPRINGS TOWER 119.9 360.6	GND CON 121.7 348.6	CLNC DEL 134.45 363.125
----------------------------	---	-------------------------------------	-------------------------------	-----------------------------------



MIRL Rwy 13-31
HIRL Rwy 17R-35L and 17L-35R
REIL Rwy 13, 17R, 31 and 35R
TDZ/CL Rwy 17L and 35R

6700		9000		ADANE	
				NUTVE	
				JATOL	
				8600	
				307°	
				7800	
				0.8 NM to RW31	
				≤3.04°	
				TCH 52	
				0.8	
				4.2 NM	
				6.1 NM	
CATEGORY		A		B	
LP		MDA		6440-1	
				284 (300-1)	
				6440-7 ⁸	
				284 (300-7 ⁸)	
LNAV		MDA		6560-1	
				404 (400-1)	
				6560-1 ¹ ⁸	
				404 (400-1 ¹ ⁸)	
<div></div> CIRCLING		6740-1		6800-1	
		553 (600-1)		613 (700-1)	
		7040-2 ¹ ²		7260-3	
		853 (900-2 ¹ ²)		1073 (1100-3)	