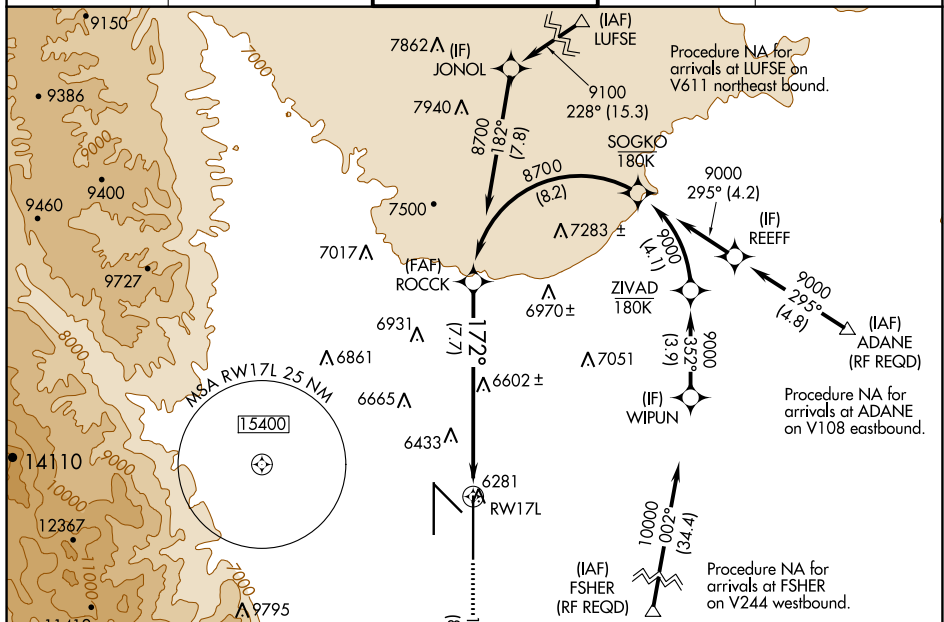


RNAV (RNP) Z RWY 17L  
CITY OF COLORADO SPRINGS MUNI (COS)

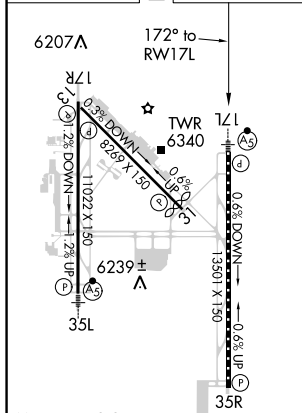
MALSR

**MISSED APPROACH:** Climb to 9000 on track 172° to CEGIX and on track 130° to JEMKI and on track 084° to DRAKE and hold.

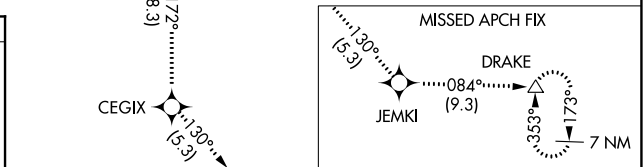
ATIS 125.0 254.3	SPRINGS APP CON 124.0 257.875	SPRINGS TOWER 119.9 360.6	GND CON 121.7 348.6	CLNC DEL 134.45 363.125
---------------------	----------------------------------	------------------------------	------------------------	----------------------------






ELEV	6187	<b>D</b>	TDZE	6187
------	------	----------	------	------

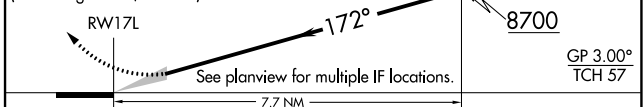


MIRL Rwy 13-31  
HIRL Rwy 17R-35L and 17L-35R  
REIL Rwy 13, 17R, 31 and 35R  
TDZ/CL Rwy 17L and 35R



9000 ↑ tr 172°	CEGIX 	tr 130°	JEMKI 	tr 084°	DRAKE 
----------------------	--	------------	--	------------	--

VGSI and RNAV glidepath not coincident (VGSI Angle 3.00/TCH 53).



CATEGORY	A	B	C	D
RNP 0.15 DA		6557/40	370 (400-34)	
RNP 0.25 DA		6644/50	457 (500-1)	
RNP 0.30 DA		6920-2	733 (800-2)	

## AUTHORIZATION REQUIRED

RNAV (RNP) Z RWY 17L