


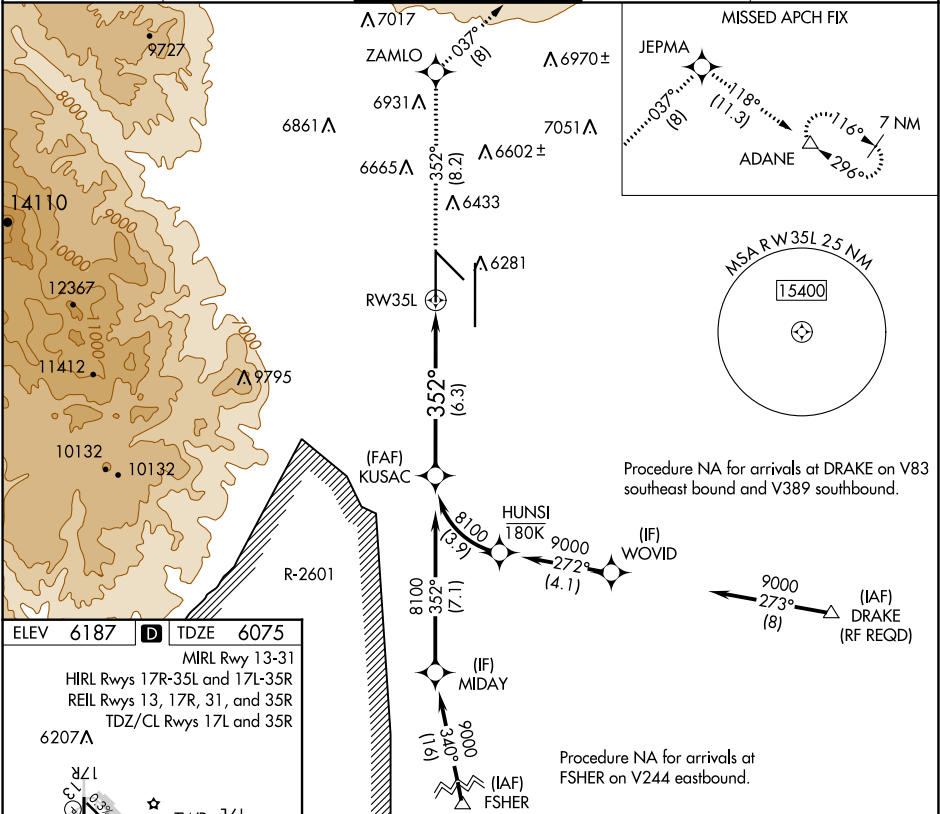
APP CRS	Rwy Idg	11022
352°	TDZE	6075
	Apt Elev	6187

RNAV (RNP) Z RWY 35L

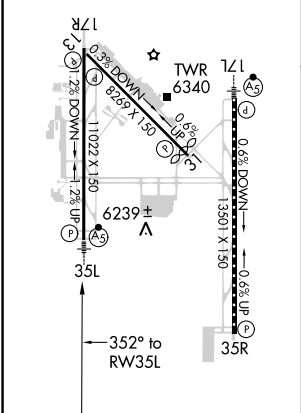
CITY OF COLORADO SPRINGS MUNI (COS)

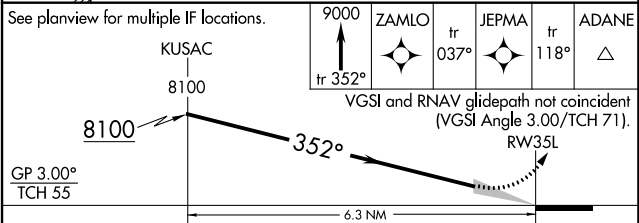
<p>▼ For uncompensated Baro-VNAV systems, procedure NA below -21°C (-5°F) or above 45°C (113°F). GPS required. For inop MALS increase RNP 0.15 visibility all Cnts to RVR 5000. RADAR monitoring required when R-2601 in use.</p>	<p>MALS</p> 	<p>MISSED APPROACH: Climb to 9000 on track 352° to ZAMLO and on track 037° to JEPMA and on track 118° to ADANE and hold.</p>
---	---	--

ATIS 125.0 254.3	SPRINGS APP CON 124.0 257.875	SPRINGS TOWER 119.9 360.6	GND CON 121.7 348.6	CLNC DEL 134.45 363.125
----------------------------	---	-------------------------------------	-------------------------------	-----------------------------------



ELEV	6187	D	TDZE	6075
MIRL Rwy 13-31				
HIRL Rwy 17R-35L and 17L-35R				
REIL Rwy 13, 17R, 31, and 35R				
TDZ/CL Rwy 17L and 35R				
6207A				



See planview for multiple IF locations.				
				
GP 3.00° TCH 55				
6.3 NM				
CATEGORY	A	B	C	D
RNP 0.15 DA		6372/30	297 (200-5%)	
RNP 0.30 DA		6427/40	352 (300-34)	

AUTHORIZATION REQUIRED